



Justin Close, TW8

£690,000

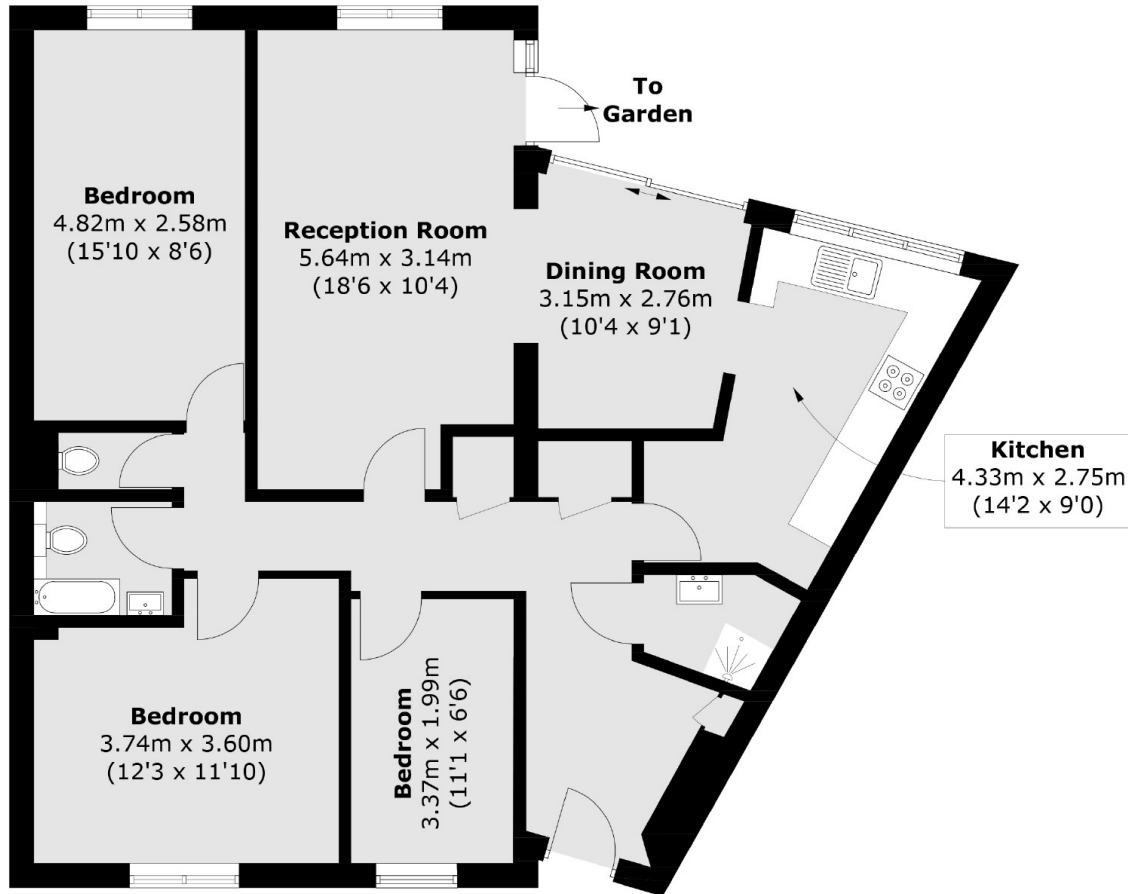
Set within the sought-after Brentford Dock development, a rarely available three double bedroom, two bathroom ground floor apartment with unobstructed views across the River Thames. With allocated parking, share of freehold and offered with no onward chain.

Brentford Dock is a popular riverside development within walking distance to Brentford High Street. It is within walking distance of Brentford overground station and a short drive from the M4/A4 providing great access in and out of London.

Features

- Three Double Bedrooms
- Two Bathrooms
- Allocated Parking
- Share Of Freehold
- River Views
- No Onward Chain

Justin Close,
Brentford, TW8



Total area (approx.): 91.6 sq. m (986.0 sq. ft)