



## Point Wharf Lane, TW8

£475,000

OIEO An exceptionally bright and well presented two bedroom apartment situated on the first floor of this well sought-after development. With floor to ceiling windows, long lease, allocated parking, modern finish and south-facing views across the river.

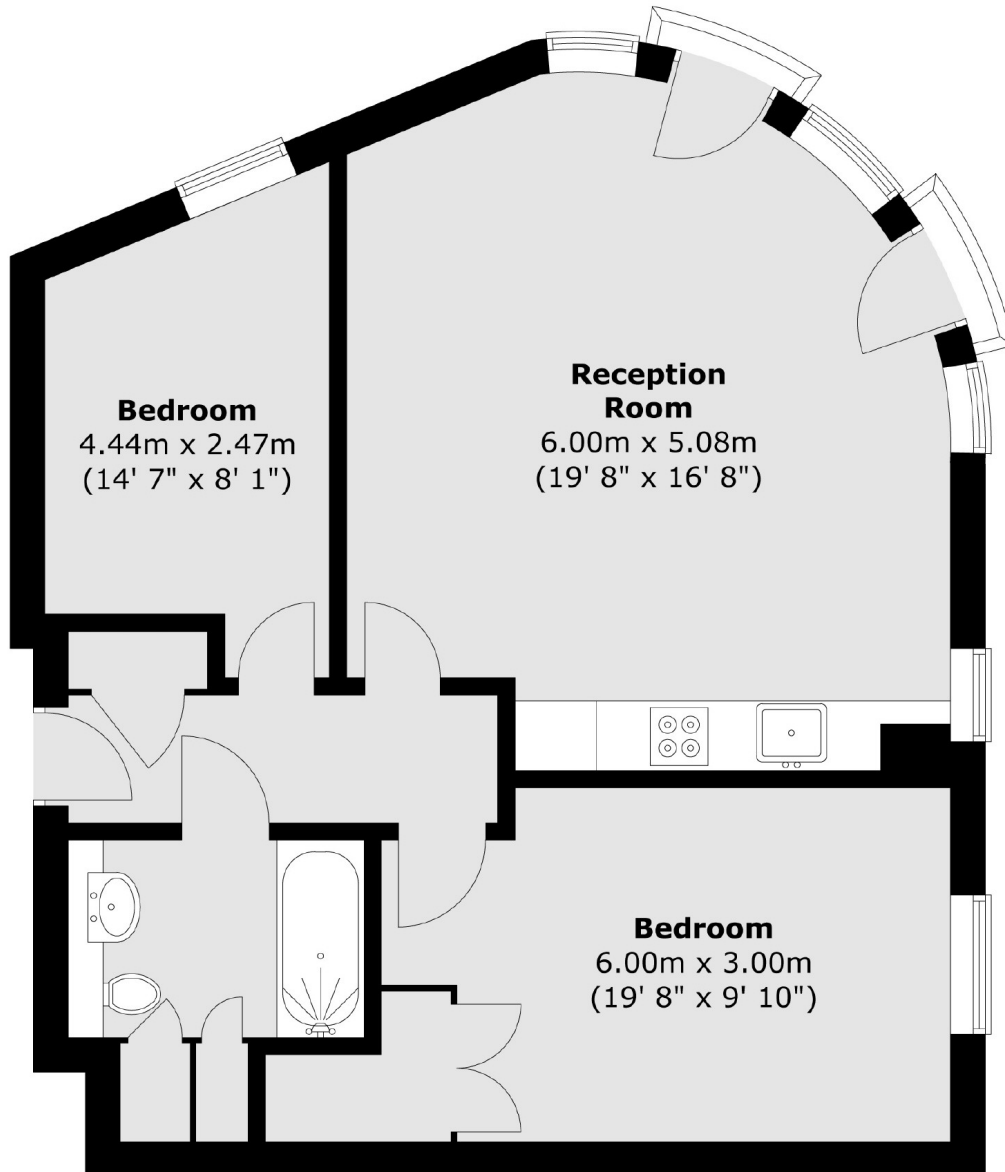
Situated on the edge of the prestigious Ferry Quays waterside community, Point Wharf Lane is a popular riverside development close to Brentford High Street. It is within half a mile from Brentford overground station and a short drive from the M4/A4 providing great access in and out of London.

### Features

- Two Double Bedrooms
- Modern Finish
- Allocated Parking
- Lift Access
- Concierge
- South-Facing River Views

Point Wharf Lane,  
Brentford, TW8

**First Floor**



Total area (approx.) : 65.1 sq. m (701 sq. ft)