



Marlborough Road, W4

£750 Per week

This three double bedroom apartment offers two bathrooms, a spacious reception room, underground parking and a well-maintained communal gardens. This property is perfect for families and professional sharers alike.

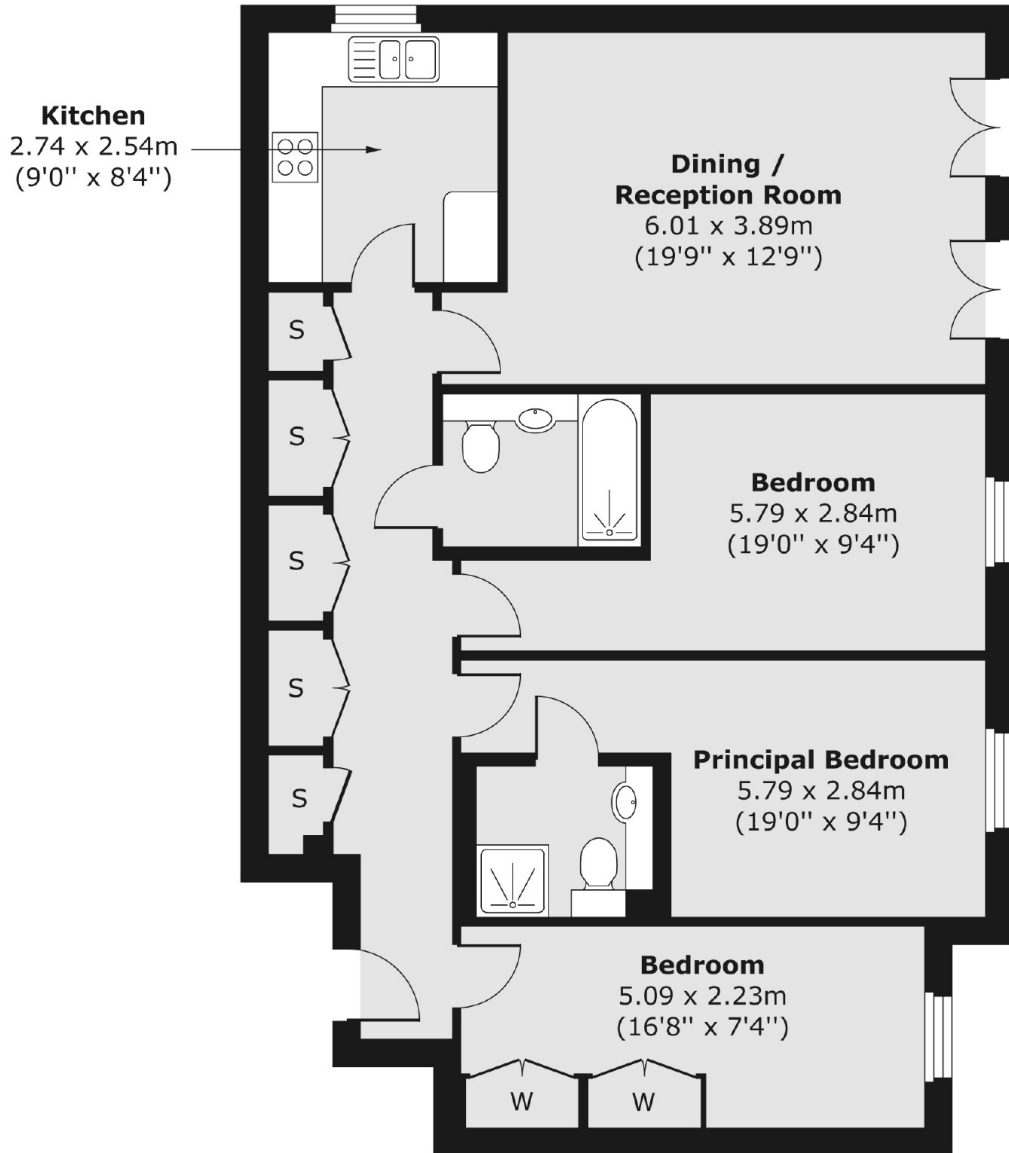
Marlborough Road is just off Chiswick High Road and is located less than half a mile from both Gunnersbury and Chiswick Park underground stations.

Features

- Three Double Bedrooms
- Two Bathrooms
- Purpose-Built
- Communal Gardens
- Central Location
- Underground Parking

Marlborough Road,
London, W4

First Floor



Total area (approx.) 90.10 sq. m (970 sq. ft)