



Brook Road South, TW8

£725,000

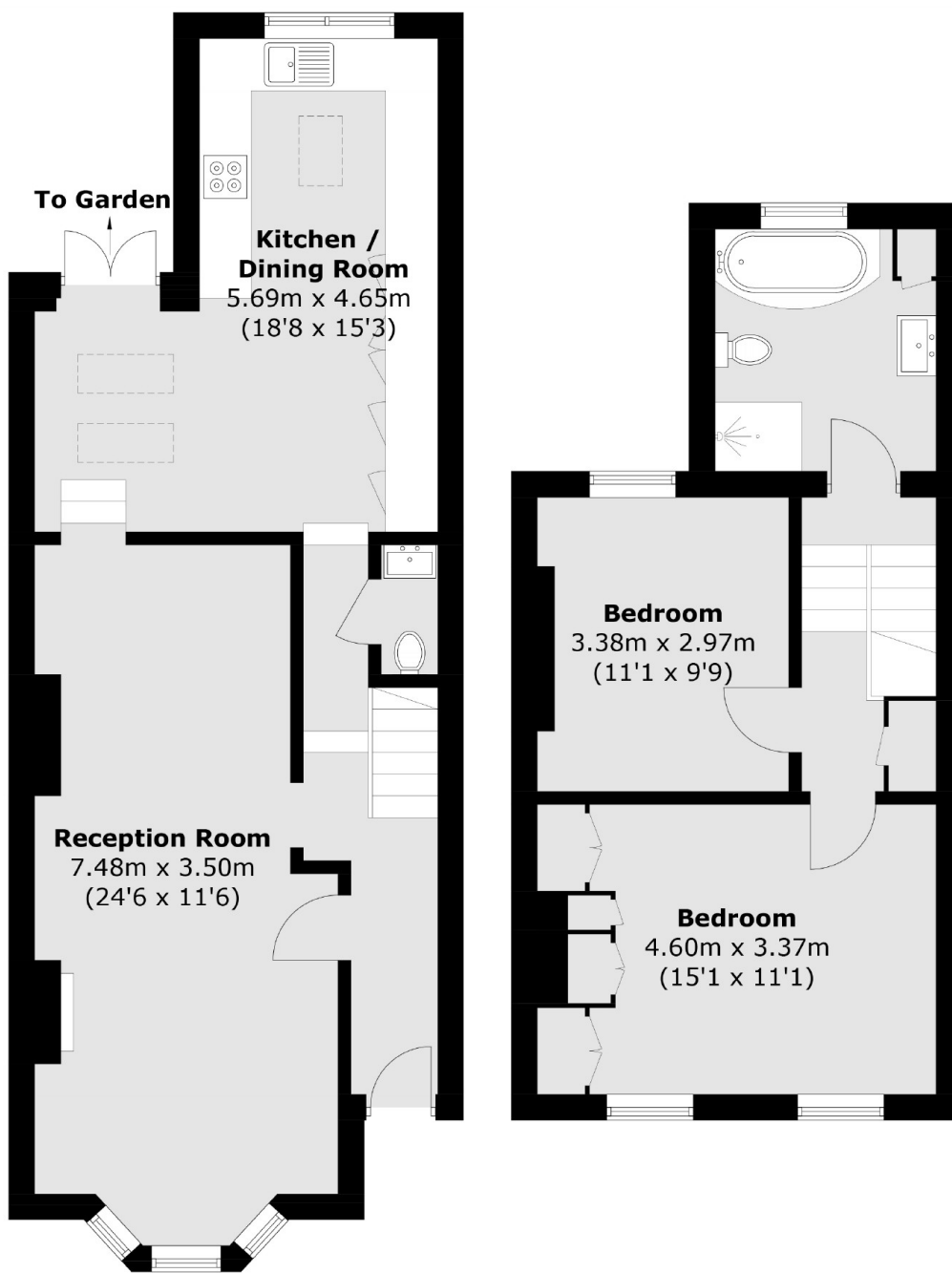
A well-presented and charming two bedroom period house with a bright and open double reception room, a modern kitchen/diner, recently refurbished bathrooms and a south west facing garden. The property further benefits from a short walk to amenities and transport.

Brook Road South is located within half a mile of Brentford School for Girls, Brentford High Street and Brentford Station. You are also a short walk to the River Thames and associated pubs and restaurants.

Features

- Period Property
- Two Bedrooms
- Two Bathrooms
- Modern Kitchen
- Close To Amenities
- Close To Transport

Brook Road South, Brentford, TW8



Ground Floor

First Floor

Total area (approx.): 95.6 sq. m (1,032.2 sq. ft)