



Point Wharf Lane, TW8

£475,000

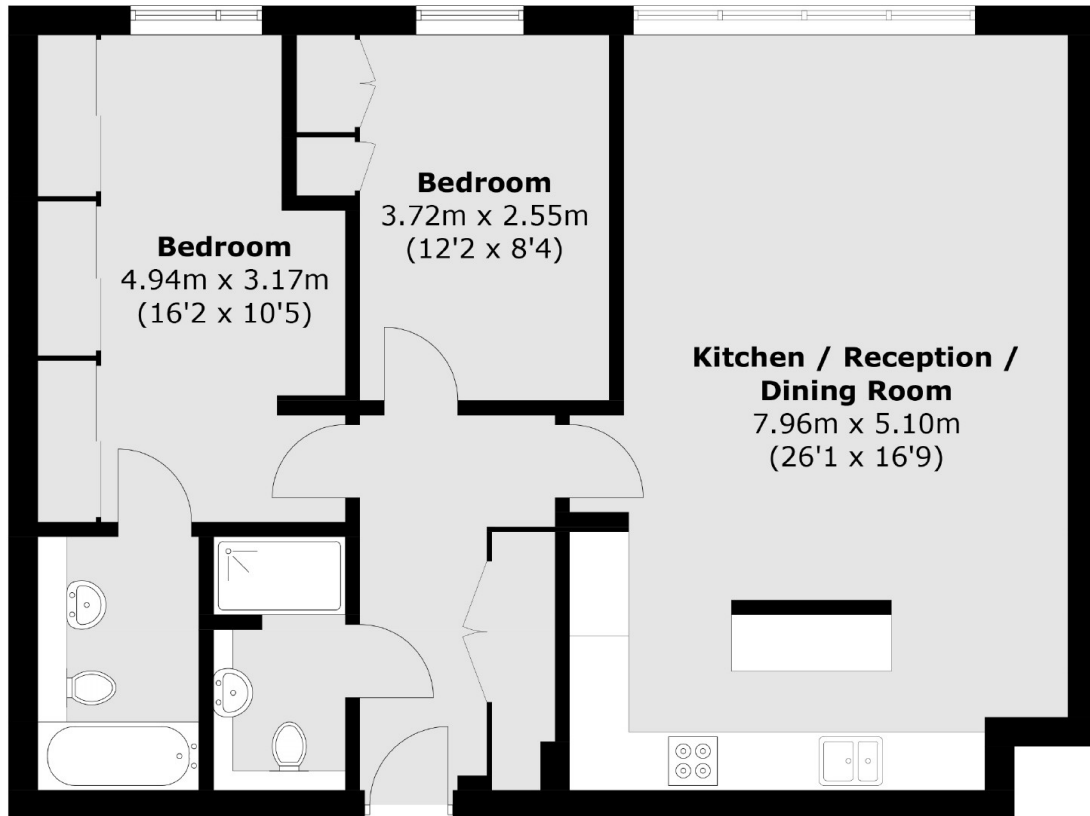
A well presented two bedroom, two bathroom apartment with south-facing river views. With floor to ceiling windows, open-plan living, secure parking and offered with no onward chain.

Situated on the edge of the prestigious Ferry Quays waterside community, Point Wharf Lane is a sought-after riverside development close to Brentford High Street. It is within half a mile from Brentford overground station and a short drive from the M4/A4 providing great access in and out of London.

Features

- Two Double Bedrooms
- Two Bathrooms
- Private Terrace
- Secure Parking
- South Facing River Views
- No Onward Chain

Point Wharf Lane,
Brentford, TW8



Total area (approx.): 81.3 sq. m (875.1 sq. ft)