



Weston Road, W4

£575,000

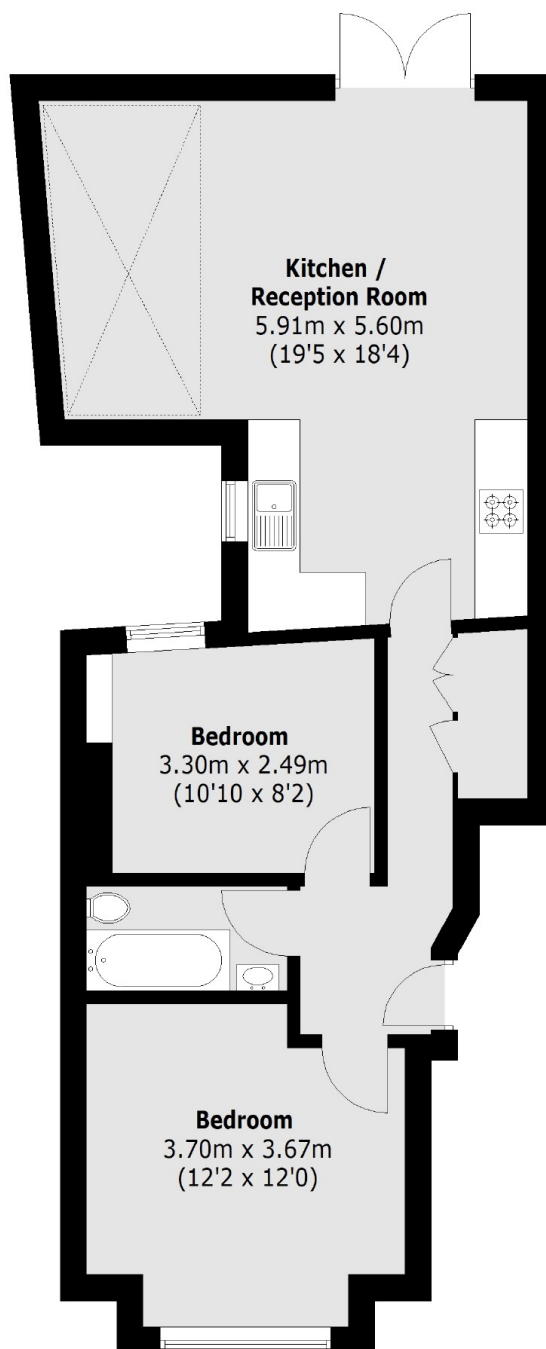
A well presented two bedroom apartment with a well proportioned open plan living space to the rear of the property. This room opens into a bright and open garden that is circa 25 ft long. The property has a share of the freehold and is offered with no onward chain.

Weston Road is within 0.1 miles of South Acton station (Overground) and 0.4 miles of Chiswick Park station (District). The property is also within 0.5 miles of the shops, restaurants and pubs of Chiswick High Road. Local green spaces such as Turnham Green and the Gunnersbury Nature Reserve are nearby as well as local outstanding schools.

Features

- Garden Flat
- Share Of Freehold
- Close To Local Transport
- Open Plan Living
- Two Double Bedrooms
- No Onward Chain

Weston Road,
London, W4



Ground Floor

Total area (approx.): 59.8 sq. m (643.6 Sq. ft)

Dexters

Chiswick
388 Chiswick High Road
London
W4 5TF
Sales
020 8995 4321

Energy Rating: D. We aim to make our particulars both accurate and reliable. However they are not guaranteed; nor do they form part of an offer or contract. If you require clarification on any points then please contact us, especially if you're traveling some distance to view. Please note that appliances and heating systems have not been tested and therefore no warranties can be given as to their good working order.

 **RICS** | Regulated
Estate Agent
and Letting Agent

dexters.co.uk