



## Netheravon Road, W4 £2,350,000

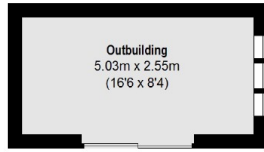
A natural three storey period house with massive potential on one of Chiswick's premier streets which also retains much its original period features. The house consists of five bedrooms, three bathrooms, a double reception room and a large garden that includes a home office/outbuilding.

Netheravon Road is located just off of Chiswick High Road. You would be a short walk to both Stamford Brook and Turnham Green tube stations which are serviced by the Piccadilly and District lines. Additionally, the property's location allows for a short walk to the River Thames, the Hogarth Health Club and High Road House - a Soho House Club venue.

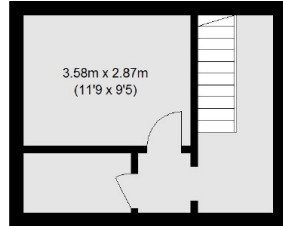
### Features

Stunning Period House With Original Features  
Large Garden  
Central Location  
Close To Transport/Amenities  
Potential To Extend  
Victorian House

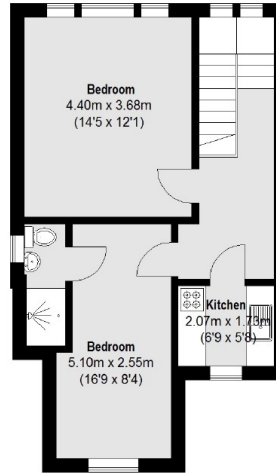
# Netheravon Road, London, W4



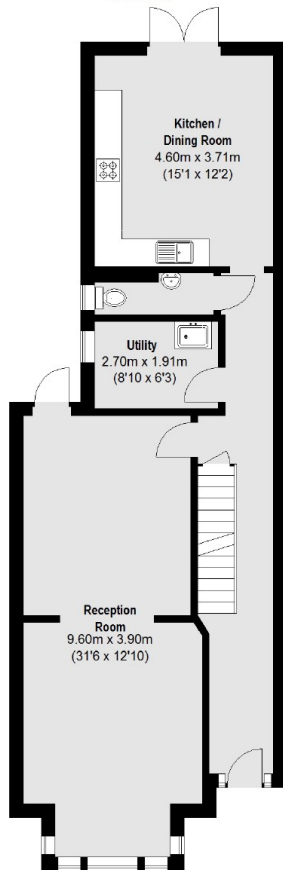
(Not Shown In Actual  
Location / Orientation)



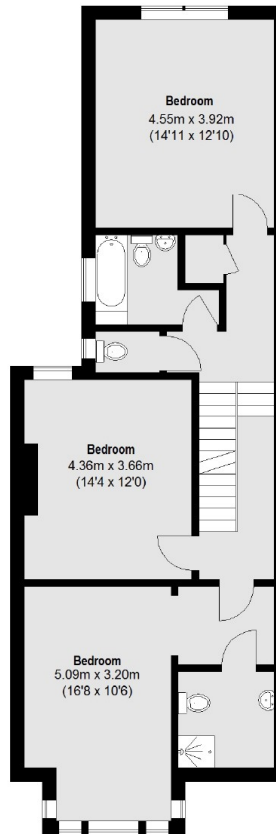
Basement



Second Floor



Ground Floor



First Floor

Total area (approx.): 228.21 sq. m (2456 Sq. ft)  
Outbuilding : 13.37 sq. m (144 Sq. ft)