



Town Meadow, TW8

£425,000

This is a two bedroom and two bathroom apartment offers open plan spacious living with a private garden, private secure parking and close proximity to the River Thames. The property is also offered with no onward chain.

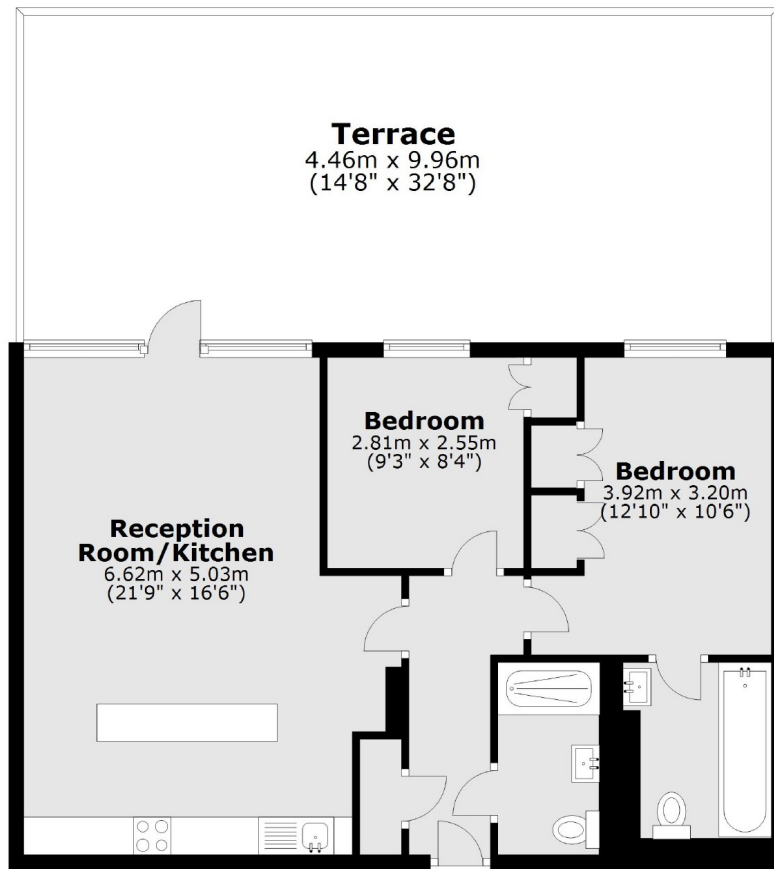
Town Meadow is a sought-after river side development close to Brentford High Street. It is within half a mile from Brentford overground station and a short drive from the M4/A4 providing great access in and out of London.

Features

- No Onward Chain
- Riverside Development
- Allocated Secure Parking
- Easy Access In/Out Of London
- Close To Amenities
- Private Garden

Town Meadow, Brentford, TW8

Ground Floor



Total area: approx. 67.1 sq. metres (722.4 sq. feet)