



Montgomery Road, W4

£800,000

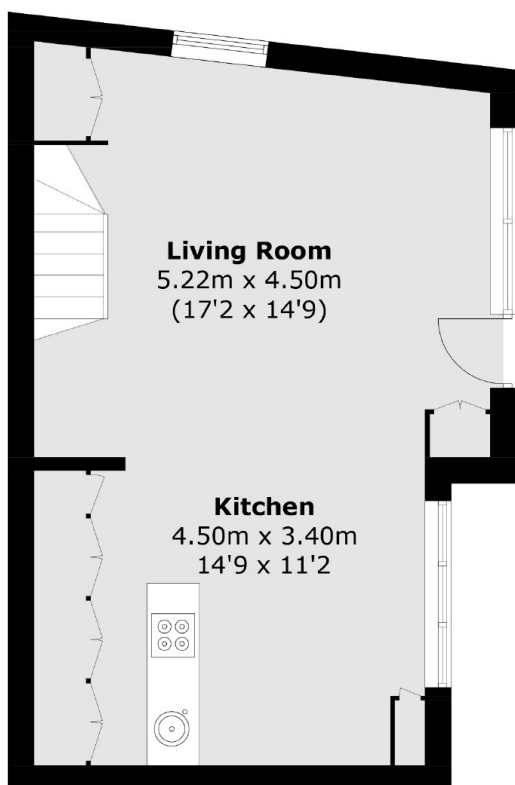
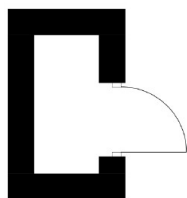
A two bedroom house that enjoys an open plan living area downstairs and a wrap around garden space that follows around the house. The house is located towards the centre of Chiswick and benefits from close proximity to transport links and local shops and restaurants. The property is offered chain free. There is potential to extend into the loft.

Montgomery Road is located within half a mile of Chiswick Park (District) and South Acton (Overground) underground stations. The property is also close to local amenities and bus links on Acton Lane and Chiswick High Road. Local schools such as Belmont and green spaces are also close by.

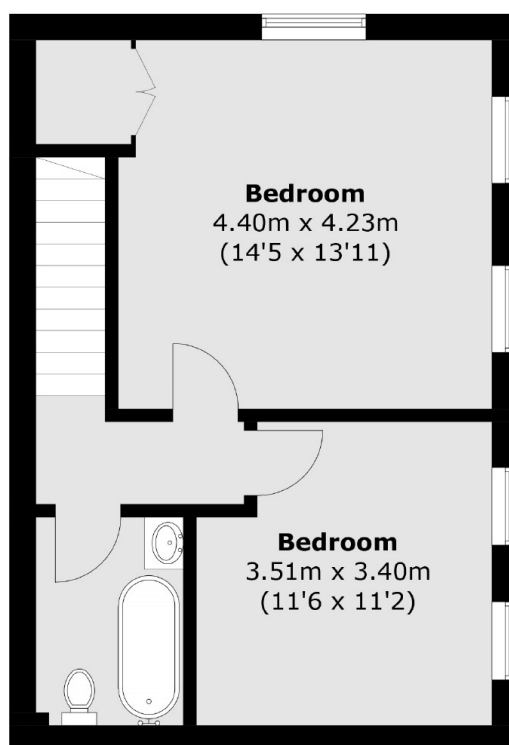
Features

- Central Location
- Close To Transport
- Chain Free
- Potential To Extend Into Loft
- Open Plan Living
- Belmont School Catchment

Montgomery Road, London, W4



Ground Floor



First Floor

Total area (approx.): 81.2 sq. m (874.0 sq. ft)
(Excluding External Cupboard)