



Marlborough Road, W4

£875,000

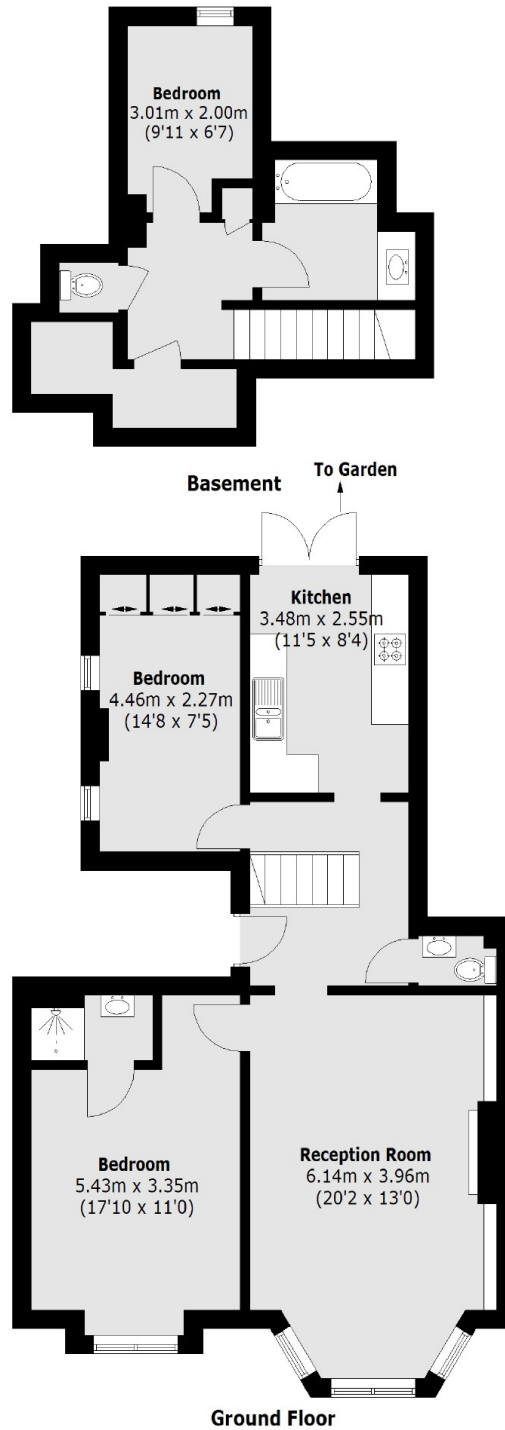
A large three bedroom apartment with a private garden in a central location. This property benefits from all three sought after aspects, size, location and private outside space. The property is also offered chain free and has a share of the freehold.

Marlborough Road is located just off Turnham Green and within 500 metres of both Chiswick Park (District) and Gunnersbury stations (District & Overground) offering excellent access into town. Chiswick High Road is also very close by.

Features

- Central Location
- Period Apartment
- Ground Floor
- Private Garden
- Share Of Freehold
- Chain free

Marlborough Road, London, W4



Total area (approx.): 93.6 sq. m (1,007.5 Sq. ft)
(Including Basement)