



## Town Meadow, TW8

£275,000

This bright one bedroom apartment is a great starter home or rental property. The property benefits from a lift service, close proximity to the river and allocated underground parking.

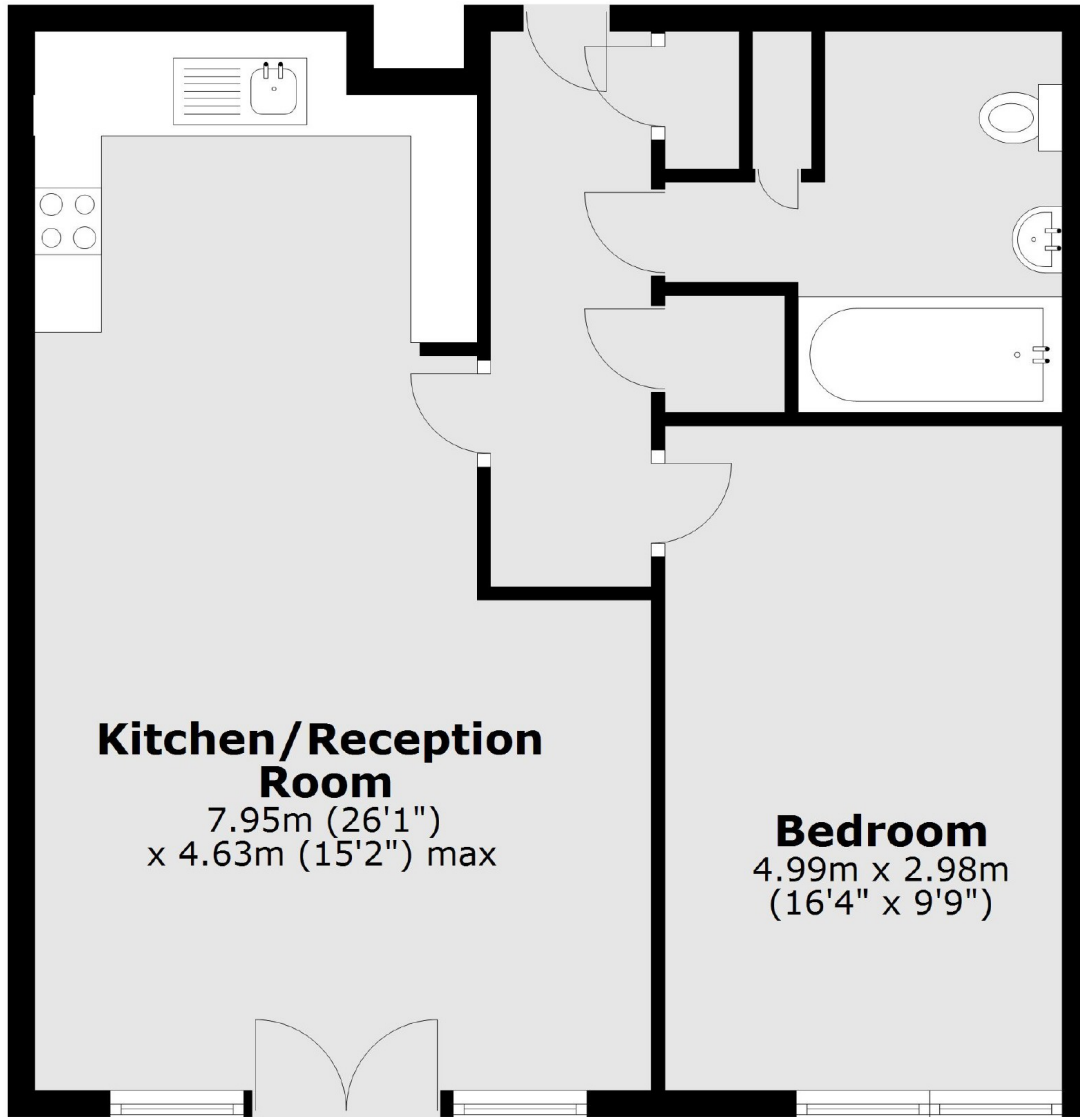
Town Meadow is within a sought-after development in Brentford right by the River Thames and is within half a mile from Brentford overground station.

### Features

- Riverside Location
- First Floor
- Lift Service
- Underground Parking
- Close To Station
- Over 650 Sq/Ft

Town Meadow,  
Brentford, TW8

## First Floor



Total area: approx. 60.8 sq. metres (654.2 sq. feet)