



Church Road, W3

£650,000

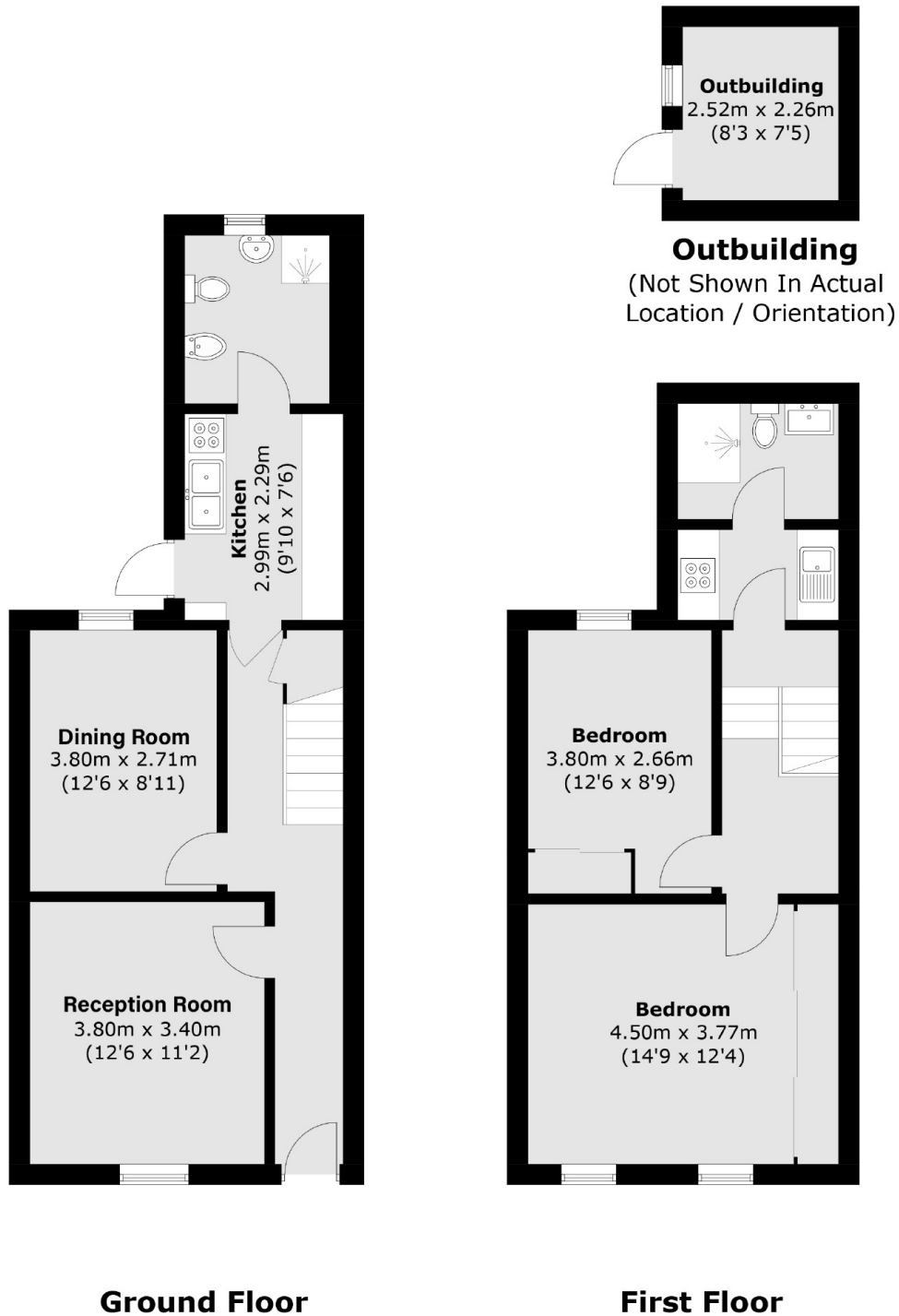
This delightful Victorian period house offers a perfect blend of classic charm and modern convenience. The property features two spacious reception rooms, two bathrooms, and an outbuilding studio, ideal for a home office or creative space. With its elegant period details and versatile living spaces, this home provides comfort and style in a central location.

Situated in the heart of Acton and just over half a mile from Acton Town tube station (District and Piccadilly lines) and South Acton station (Overground).

Features

- Mid-Terraced House
- Victorian Period
- Garden Studio
- No Onward Chain
- Two bathrooms
- Two Receptions

Church Road,
London, W3



Ground Floor

First Floor

Total area (approx.): 91.1 sq. m (980.6 sq. ft)
Outbuilding area (approx.): 5.8 sq. m (62.4 sq. ft)