



## Horn Lane, W3

£299,950

A charming retirement apartment, exclusively for over 65s, which spans over 900 sq ft of lateral living space. The property is bright and spacious with two large double bedroom, two bathroom and a large entertaining space, as well as a separate kitchen. The property also includes access to a beautifully maintained communal garden, a drawing room for socialising and an on-site laundry room for added convenience. Ideal for independent living in a serene and secure environment.

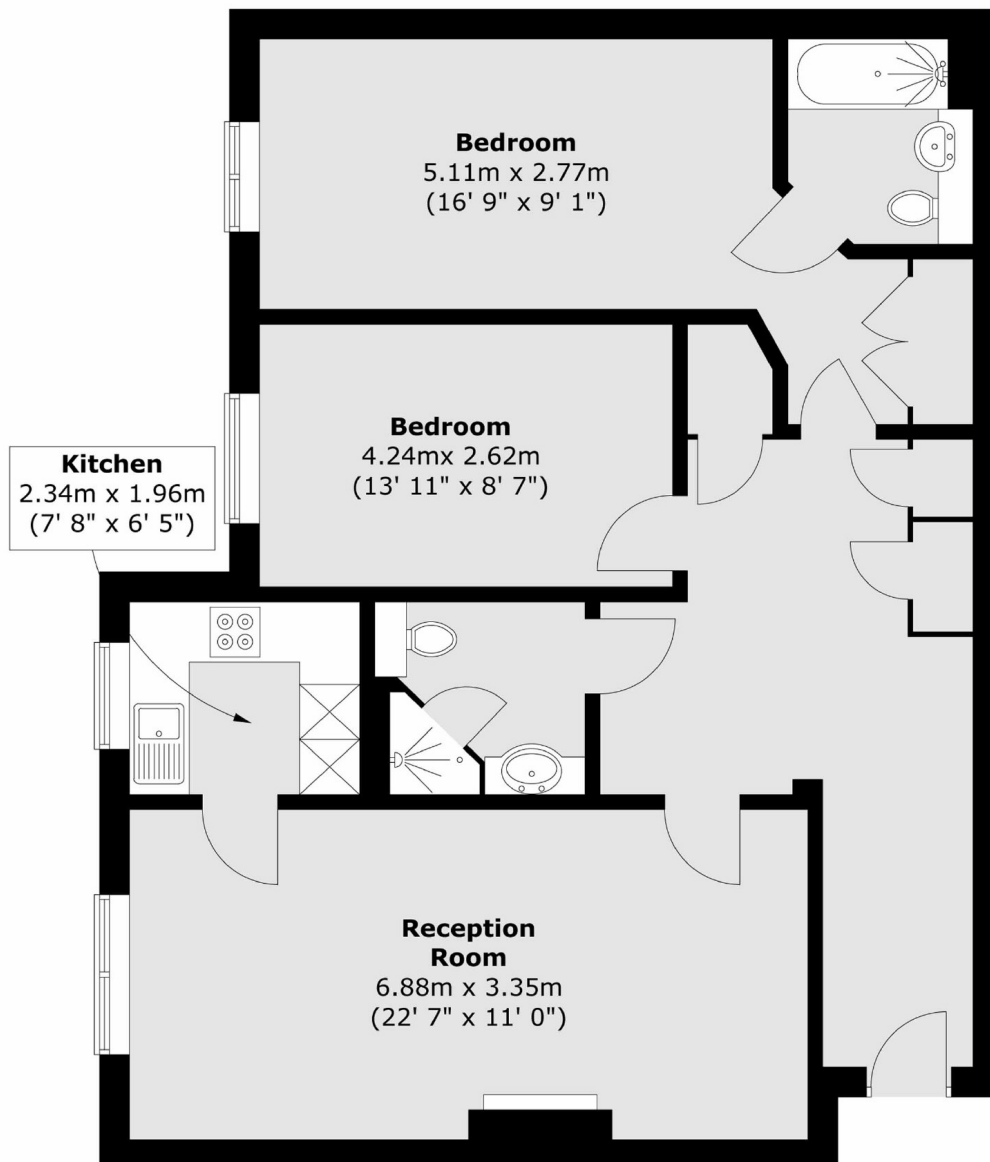
Situated close to amenities and local shops. Acton Main Line station (Elizabeth line) is a two minute walk away and North Acton tube is just over fifteen minutes walk away.

### Features

- Over 65s Only
- Two Bedroom
- Two Bathroom
- Gated Parking
- Communal Garden
- Communal Social Area

Horn Lane,  
London, W3

**Third Floor**



Total area (approx.) : 85.2 sq. m (917 sq. ft)