



## Abbeyfields Close, NW10

£335,000

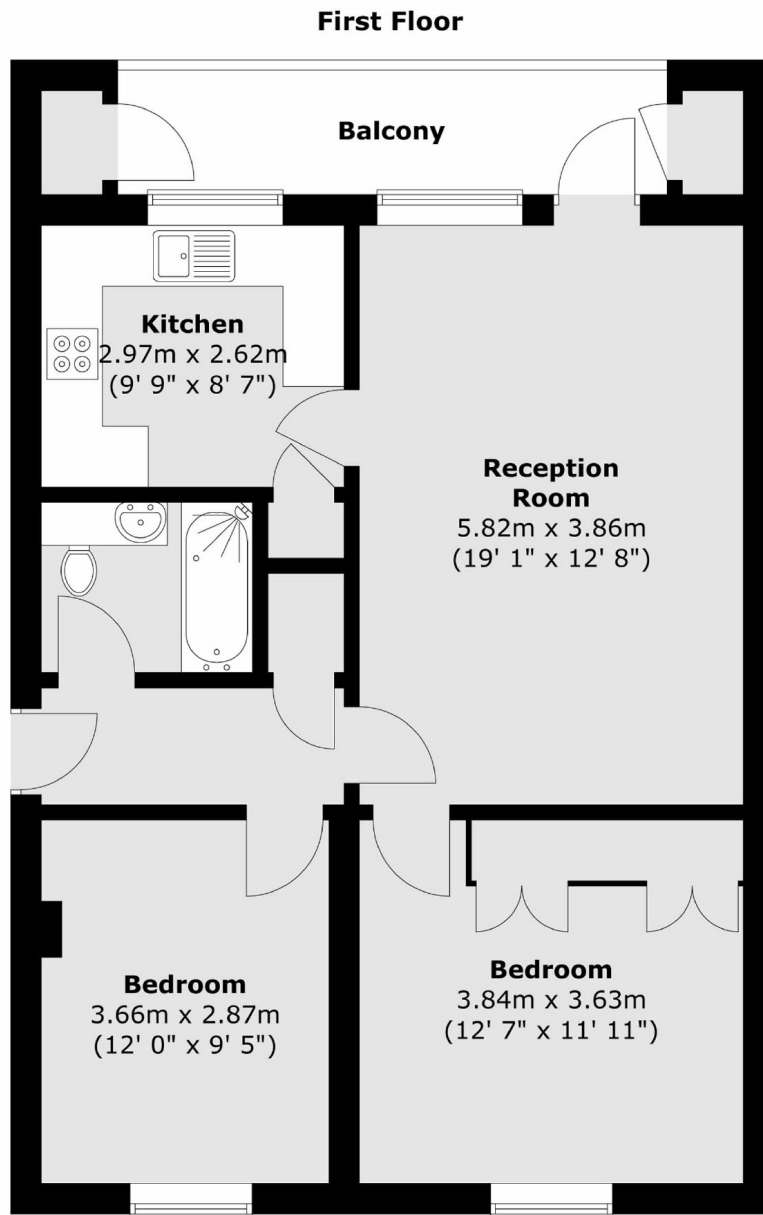
A first floor flat spanning over 700 sq ft of lateral living space, The property is filled with natural light, with two good size bedrooms, separate kitchen and reception room along with a private balcony overlooking the communal gardens. Additionally there is off street parking and will be sold chain free. Abbeyfields Close Would be perfect for a first time buyer and someone looking withing the school catchment areas.

Just over half a mile from Hanger Lane (Central line) and Park Royal (Piccadilly line) tube stations. Local bus routes include the 226 and there is access to major trunk roads including the A40 and A406 close by.

### Features

- Two Bedrooms
- Separate Kitchen
- First Floor
- Private Balcony
- Communal Garden
- Allocated Parking Space

Abbeyfields Close,  
London, NW10



Total area (approx.) : 67.3 sq. m (724 sq. ft)  
Total balcony area (approx.) : 6.8 sq. m (73 sq. ft)