



Highfield Road, W3

£950,000

A charming end of terrace four bedroom family home with just under 1400 sq.ft of internal living space and arranged over three floors.

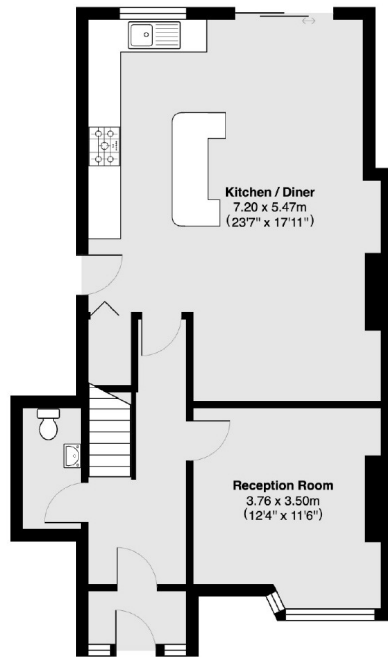
The property has been extended, creating a large kitchen and family living area along with a separate reception room and downstairs WC. Bi-fold doors lead out to a good size low maintenance. There are four bright good size bedrooms along with two family bathrooms. Additionally the property benefits from off street parking and a secluded South facing garden. Highfield Road will be sold chain free.

Highfield Road is located north of North Acton playing fields and is 0.6 miles to West Acton tube station (Central line), 0.7 miles to North Acton tube (Central line) station and 0.6 miles to Acton Main line station. For the motorists the A40 offers easy access both in and out of London.

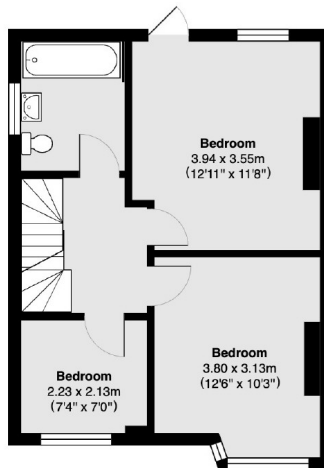
Features

- Four Bedrooms
- Two Bathrooms
- Downstairs WC
- Driveway Parking
- South Facing Garden
- No Onward Chain

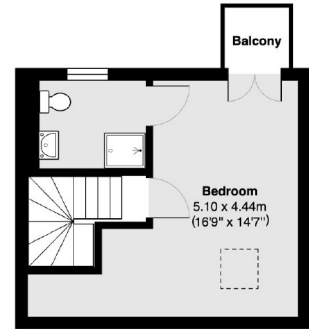
Highfield Road, London, W3



Ground Floor



First Floor



Second Floor

Total area 128.9 sq m (approx) (1388 sq ft approx)

Dexters

Acton
171 High Street
London
W3 6LP
Sales
020 8896 2112

Energy Rating: . We aim to make our particulars both accurate and reliable. However they are not guaranteed; nor do they form part of an offer or contract. If you require clarification on any points then please contact us, especially if you're traveling some distance to view. Please note that appliances and heating systems have not been tested and therefore no warranties can be given as to their good working order.

 **RICS** | Regulated
Estate Agent
and Letting Agent

dexters.co.uk