



## Bromyard Avenue, W3

£399,000

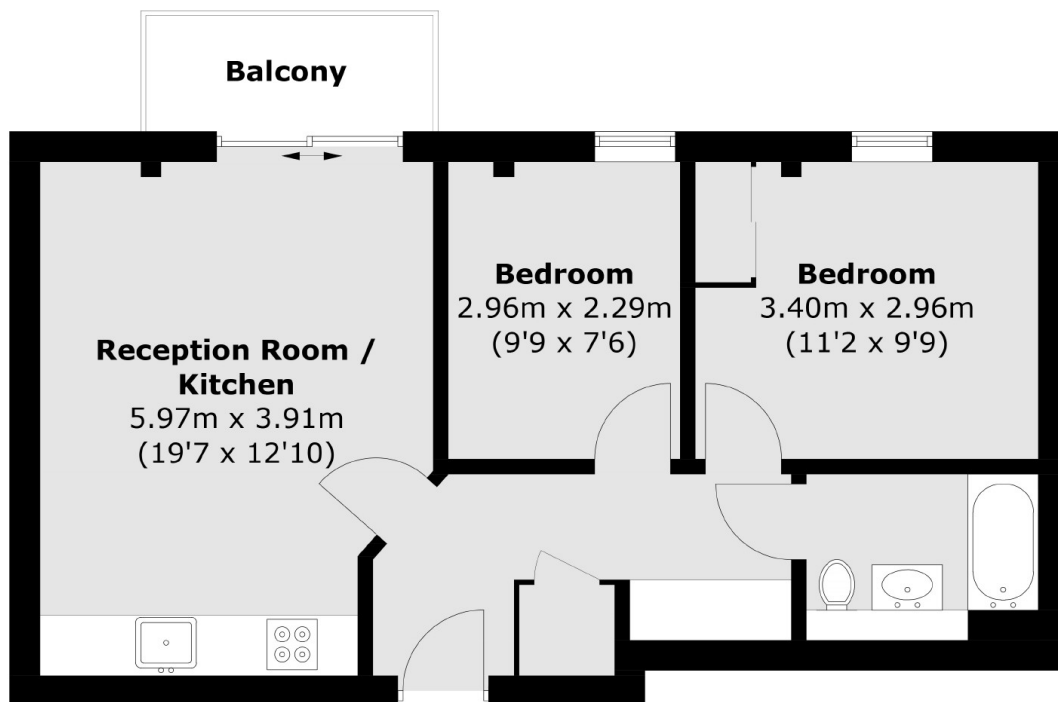
Discover urban elegance in this stylish two bedroom apartment featuring a south-facing balcony and modern amenities. Enjoy the convenience of a gated entrance and a 24 hour concierge service.

East Acton tube (Central line), Acton Central (Overground) and Acton Main Line (Elizabeth line) stations are all within easy reach. Also situated within close proximity to two health and fitness clubs.

### Features

- Two Bedrooms
- South Facing Balcony
- No Onward Chain
- Gated Development
- 24 Hour Concierge
- Lift Access

Bromyard Avenue,  
London, W3



### Third Floor

Total area (approx.): 49.4 sq. m (531.7 sq. ft)  
Balcony area (approx.): 3.3 sq. m (35.5 sq. ft)

**Dexters**

Acton  
171 High Street  
London  
W3 6LP  
Sales  
020 8896 2112

Energy Rating: C. We aim to make our particulars both accurate and reliable. However they are not guaranteed; nor do they form part of an offer or contract. If you require clarification on any points then please contact us, especially if you're traveling some distance to view. Please note that appliances and heating systems have not been tested and therefore no warranties can be given as to their good working order.

 **RICS** | Regulated  
Estate Agent  
and Letting Agent

[dexters.co.uk](https://www.dexters.co.uk)