



## Cumberland Road, W3

£725,000

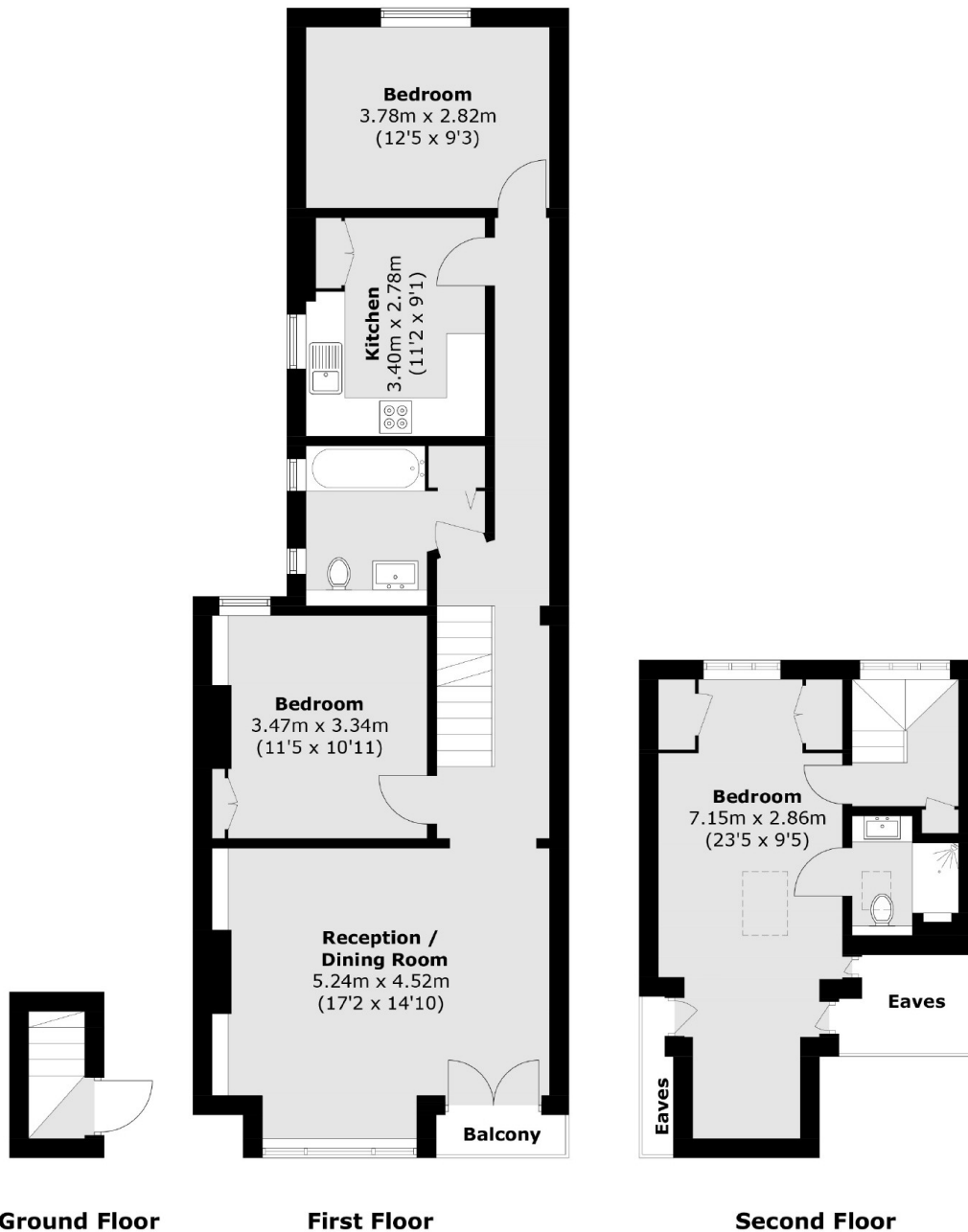
A charming split level period conversion with over a 1000 square feet of living space which features three generously proportioned bedrooms. The principle bedroom is complete with a modern en-suite with an additional family bathroom on the first floor. The living area is flooded with natural light from the West facing Juliet balcony. The property has a share of the freehold and will be sold chain free.

Cumberland Road is just off the vibrant Churchfield Road with its array of shops, restaurants and amenities, moments from Acton Central and within half a mile of the Elizabeth Line station, Acton Main Line.

### Features

- Three Bedroom
- Victorian Conversion
- Poets Corner
- Split Level
- Share of Freehold
- Chain Free

# Cumberland Road, London, W3



Total area (approx.): 102.7 sq. m (1,105.3 sq. ft)  
(Excluding Eaves)  
Balcony area (approx.): 1.2 sq. m (12.9 sq. ft)

## Dexters

Acton  
171 High Street  
London  
W3 6LP  
Sales  
020 8896 2112

Energy Rating: E. We aim to make our particulars both accurate and reliable. However they are not guaranteed; nor do they form part of an offer or contract. If you require clarification on any points then please contact us, especially if you're traveling some distance to view. Please note that appliances and heating systems have not been tested and therefore no warranties can be given as to their good working order.

 **RICS** | Regulated  
Estate Agent  
and Letting Agent

[dexters.co.uk](https://www.dexters.co.uk)