



Victoria Road, W3

£295,000

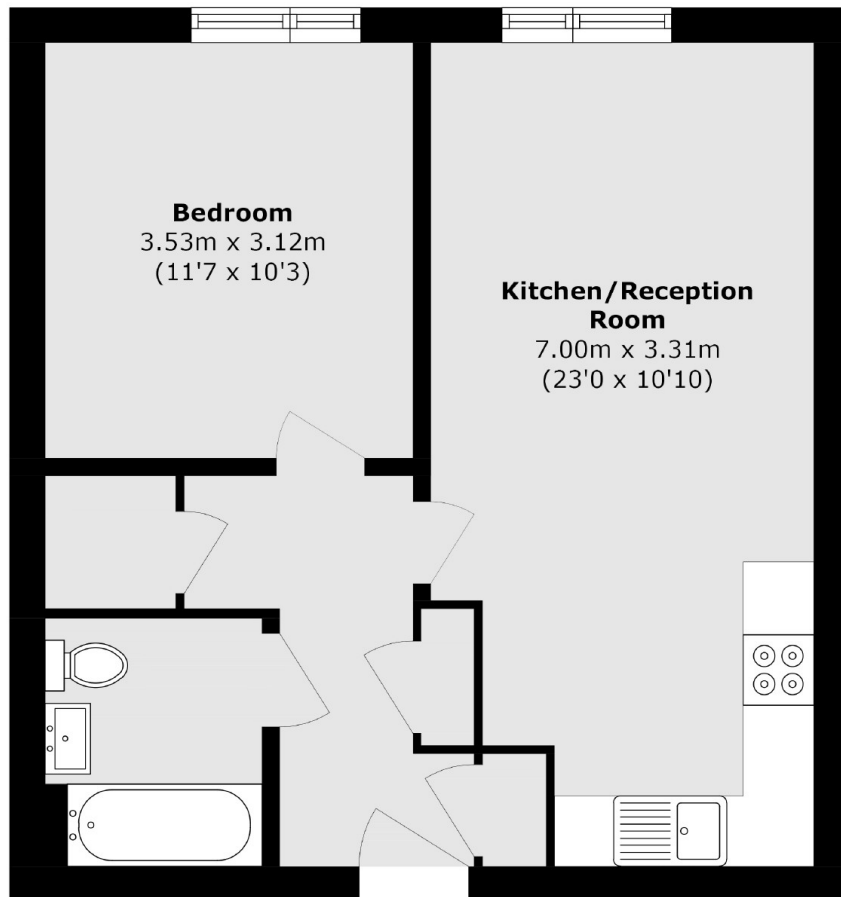
A one bedroom flat in a modern development, on the sixth floor offering close to 500 sq.ft of living space. This contemporary home features a bright and airy open-plan layout with ample storage. Ebbett Court is ideal for professionals seeking a comfortable and well connected urban lifestyle.

Conveniently located close to transport links including North Acton tube (Central line, zone 2) and Acton Main Line (Elizabeth line) stations providing easy access to the city.

Features

- One Double Bedroom
- Sixth Floor
- Modern Building
- Close to Stations
- Lift Access
- Chain Free

Victoria Road,
London, W3



Total area (approx.): 45.6 sq. m (490.8 sq. ft)