



## Park Place, W3

### £795,000

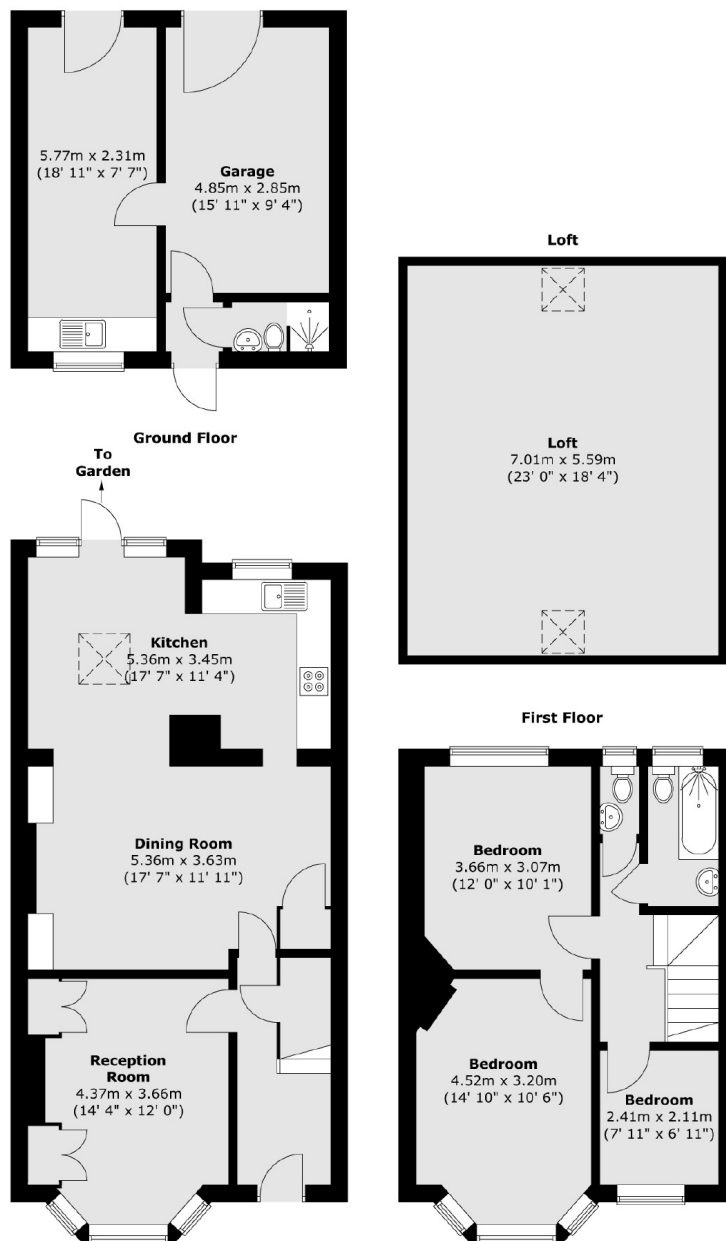
A three bedroom family home arranged over two floors with potential to extend (STPP). The property has a well-maintained garden with off-street parking and garage at the rear. Chiswick business park is within walking distance along with Gunnersbury Park just a moment away.

Situated adjacent to Gunnersbury Park and less than half a mile from Acton Town tube station (District and Piccadilly lines). Chiswick High Road is a ten-minute walk.

### Features

- Three Bedrooms
- Extended Kitchen
- Rear Garage
- Potential to Extend (STPP)
- Acton Town Tube Station
- Chain Free

# Park Place, London, W3



Total area (approx.) : 143.5 sq. m (1545 sq. ft)  
Total outbuilding area (approx.) : 31.9 sq. m (344 sq. ft)

## Dexters

Acton  
171 High Street  
London  
W3 6LP  
Sales  
020 8896 2112

Energy Rating: C. We aim to make our particulars both accurate and reliable. However they are not guaranteed; nor do they form part of an offer or contract. If you require clarification on any points then please contact us, especially if you're traveling some distance to view. Please note that appliances and heating systems have not been tested and therefore no warranties can be given as to their good working order.

 **RICS** | Regulated  
Estate Agent  
and Letting Agent

dexters.co.uk