



## Northfields Road, W3

### £995,000

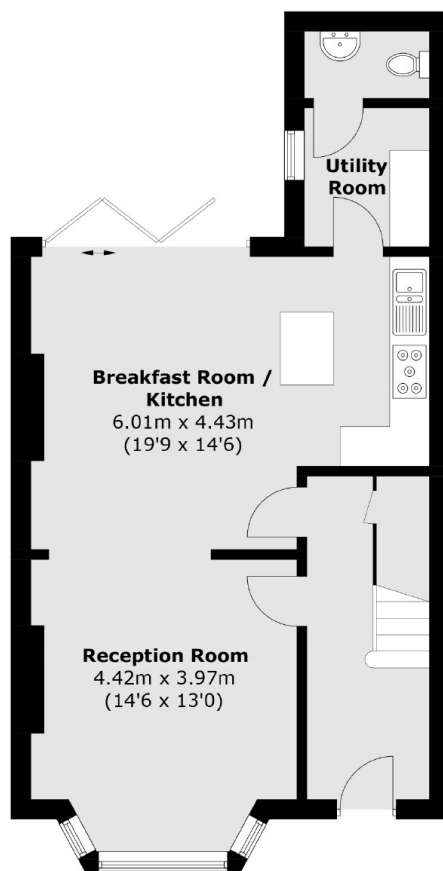
A charming end of terrace five bedroom family home boasting over 1500 sq.ft of internal living space and arranged over three floors. The owners have opened up the ground floor creating a large kitchen and family living area along with a separate utility room and downstairs WC. Bi-fold doors lead out to a good size low maintenance garden. There are five bright good size bedrooms along with two family bathrooms. Additionally the property benefits from off street parking and views of North Acton playing fields.

Northfields Road is located north of North Acton playing fields and is 0.6 miles to West Acton tube station (Central line), 0.7 miles to North Acton tube (Central line) station and 0.6 miles to Acton Main line station. For the motorist the A40 offer easy access both in and out of London.

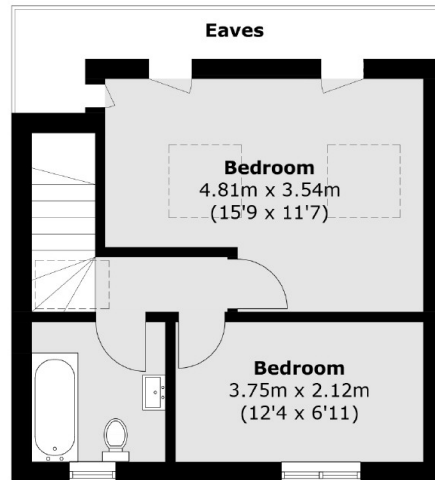
### Features

- Five Bedrooms
- Two Bathrooms
- End of Terrace
- Off Street Parking
- Overlooking Playing Fields
- Close to Transport Links

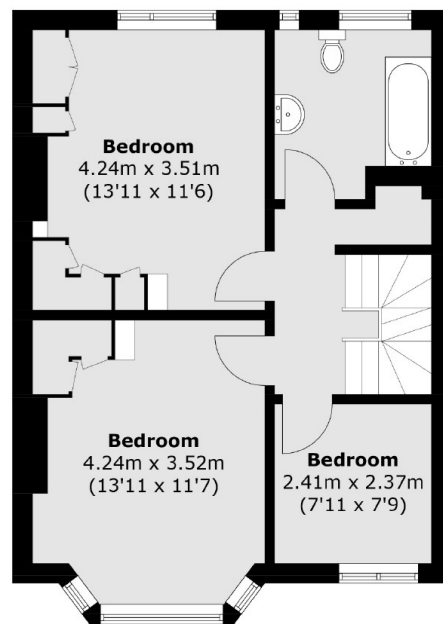
# Northfields Road, London, W3



**Ground Floor**



**Second Floor**



**First Floor**

Total area (approx.): 141.9 sq. m (1,527.4 sq. ft)  
(Excluding Eaves)

# Dexters

Acton  
171 High Street  
London  
W3 6LP  
Sales  
020 8896 2112

Energy Rating: C. We aim to make our particulars both accurate and reliable. However they are not guaranteed; nor do they form part of an offer or contract. If you require clarification on any points then please contact us, especially if you're traveling some distance to view. Please note that appliances and heating systems have not been tested and therefore no warranties can be given as to their good working order.

 **RICS** | Regulated  
Estate Agent  
and Letting Agent

[dexters.co.uk](https://www.dexters.co.uk)