



Shalimar Road, W3  
£1,050,000

**Dexters**



## Shalimar Road, W3

Beautifully presented mid-terraced period home, offering approximately 1,500 sq.ft across three floors. This fully refurbished property features four spacious bedrooms, two modern bathrooms, two elegant reception rooms, a downstairs WC, and a stylish kitchen. Perfect blend of period charm with contemporary finishes.

Just over five minutes walk from Acton Main Line station (Elizabeth line) and just over fifteen minutes walk from West Acton tube and Acton Central (Overground) stations.

### Features

- Mid-Terraced House
- Four Bedrooms
- Two Bathrooms
- Downstairs WC
- No Onward Chain
- Fully Refurbished



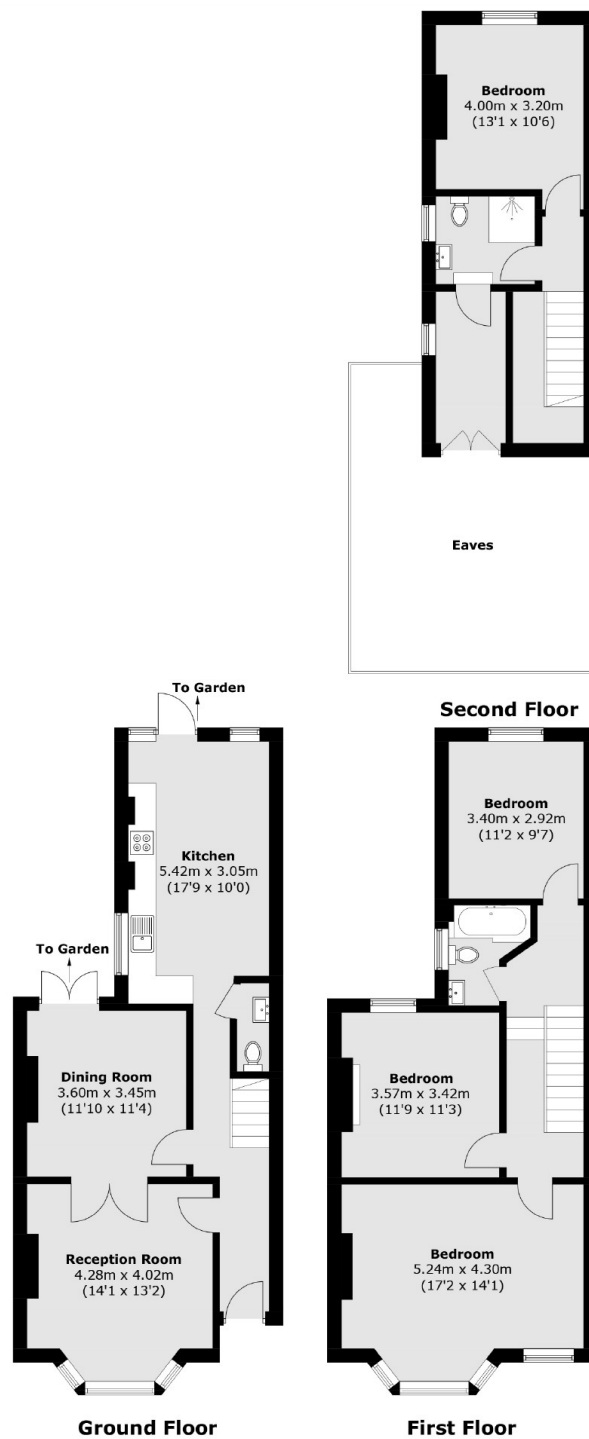








Shalimar Road,  
London, W3



Total area (approx.): 143.0 sq. m (1,539.2 sq. ft)  
(Excluding Eaves)

**Dexters**

Acton  
171 High Street  
London  
W3 6LP  
Sales  
020 8896 2112

Energy Rating: D. We aim to make our particulars both accurate and reliable. However they are not guaranteed; nor do they form part of an offer or contract. If you require clarification on any points then please contact us, especially if you're traveling some distance to view. Please note that appliances and heating systems have not been tested and therefore no warranties can be given as to their good working order.

**RICS** Regulated  
Estate Agent  
and Letting Agent

[dexters.co.uk](https://www.dexters.co.uk)