



Lakeside Drive, NW10

£500,000

An immaculate and modern two double bedroom, two bathroom flagship apartment situated on the 20th floor in Baronet House, West London. The property encompasses dual aspect skyline views of London including The Shard and London Eye as well as Wembley Stadium. With over 850 sq.ft of internal living space, this property makes it ideal for First Time Buyers in such a centrally and well connected location.

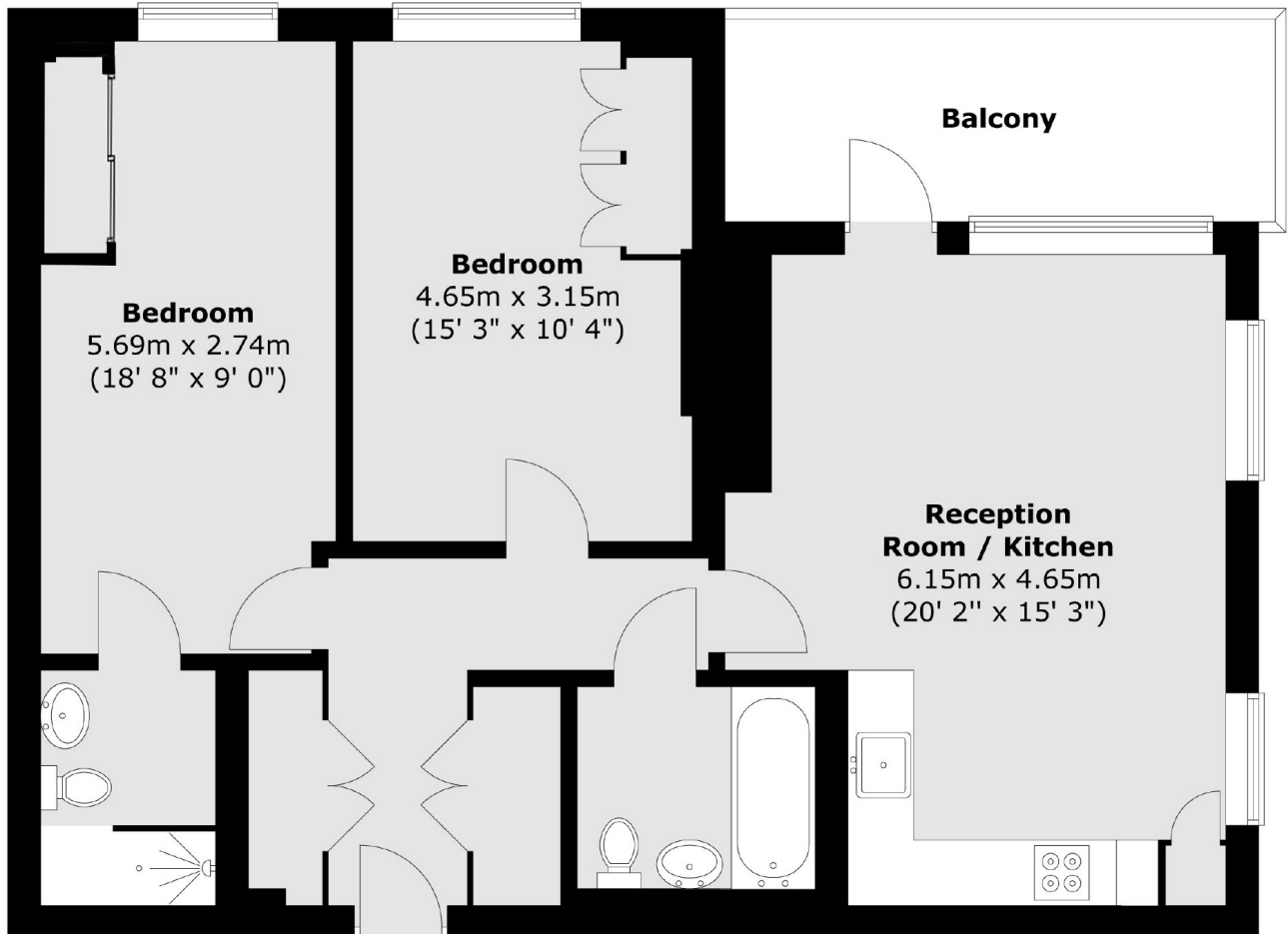
Located within a five minute walk from Park Royal station (Piccadilly Line) and just over ten minutes from Hanger Lane station (Central Line). In addition, on your door step you have a Co-Op, Barbers, Dental practise and Nursery as well as being conveniently located within a ten minute walk from Royal Leisure Park which has a multitude of amenities including Pure Gym, Asda Superstore, Odeon Luxe Cinema and Tempin Bowling.

Further to these great features, the apartment is only 25 minutes from Heathrow airport and this apartment includes fitted wardrobes, fitted blinds, built in cupboards in both rooms and a high standard of integrated appliances for your convenience and pleasure.

Features

- Two Double Bedrooms
- Private Balcony
- No Onward Chain
- En-Suite
- Communal Gardens
- 23rd Floor Communal Terrace

Lakeside Drive,
London, NW10



Total area (approx.) : 78.8 sq. m (848 sq. ft)
Total balcony area (approx.) : 8.7 sq. m (93 sq. ft)

Dexters

Acton
171 High Street
London
W3 6LP
Sales
020 8896 2112

Energy Rating: B. We aim to make our particulars both accurate and reliable. However they are not guaranteed; nor do they form part of an offer or contract. If you require clarification on any points then please contact us, especially if you're traveling some distance to view. Please note that appliances and heating systems have not been tested and therefore no warranties can be given as to their good working order.

 **RICS** | Regulated
Estate Agent
and Letting Agent

dexters.co.uk