



Cumberland Park, W3

£950,000

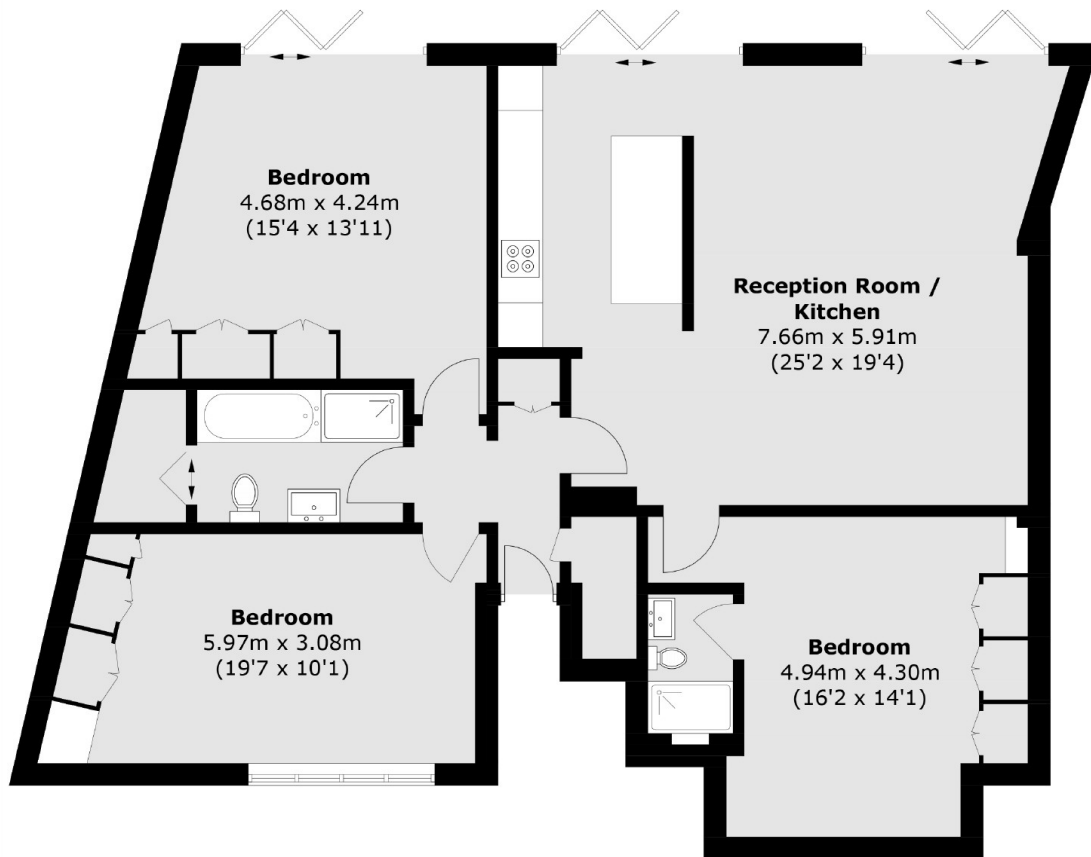
This newly converted, three bedroom garden flat with over offers 1,200 sq.ft of stylish living space, finished to a high standard throughout. The property is set within a detached building and features two spacious bedrooms, two modern bathrooms, and an additional home office, ideal for remote working or study. A bright and airy living area leads to a private balcony, perfect for enjoying outdoor moments. With its contemporary design and quality finishes, this flat offers both comfort and convenience for modern living

Just over five minutes walk from Churchfield Road's array of eateries and shops and Acton Central station (Overground). Acton Main Line station (Elizabeth line) is less than half a mile away.

Features

Three Bedroom
Garden Flat
Share of Freehold
Communal Front Garden
Newly Converted
CPZ Parking Available

Cumberland Park, London, W3



Total area (approx.): 113.9 sq. m (1226.0 sq. ft)

Dexters

Acton
171 High Street
London
W3 6LP
Sales
020 8896 2112

Energy Rating: C. We aim to make our particulars both accurate and reliable. However they are not guaranteed; nor do they form part of an offer or contract. If you require clarification on any points then please contact us, especially if you're traveling some distance to view. Please note that appliances and heating systems have not been tested and therefore no warranties can be given as to their good working order.

 **RICS** | Regulated
Estate Agent
and Letting Agent

[dexters.co.uk](https://www.dexters.co.uk)