



## The Vale, W3

£330,000

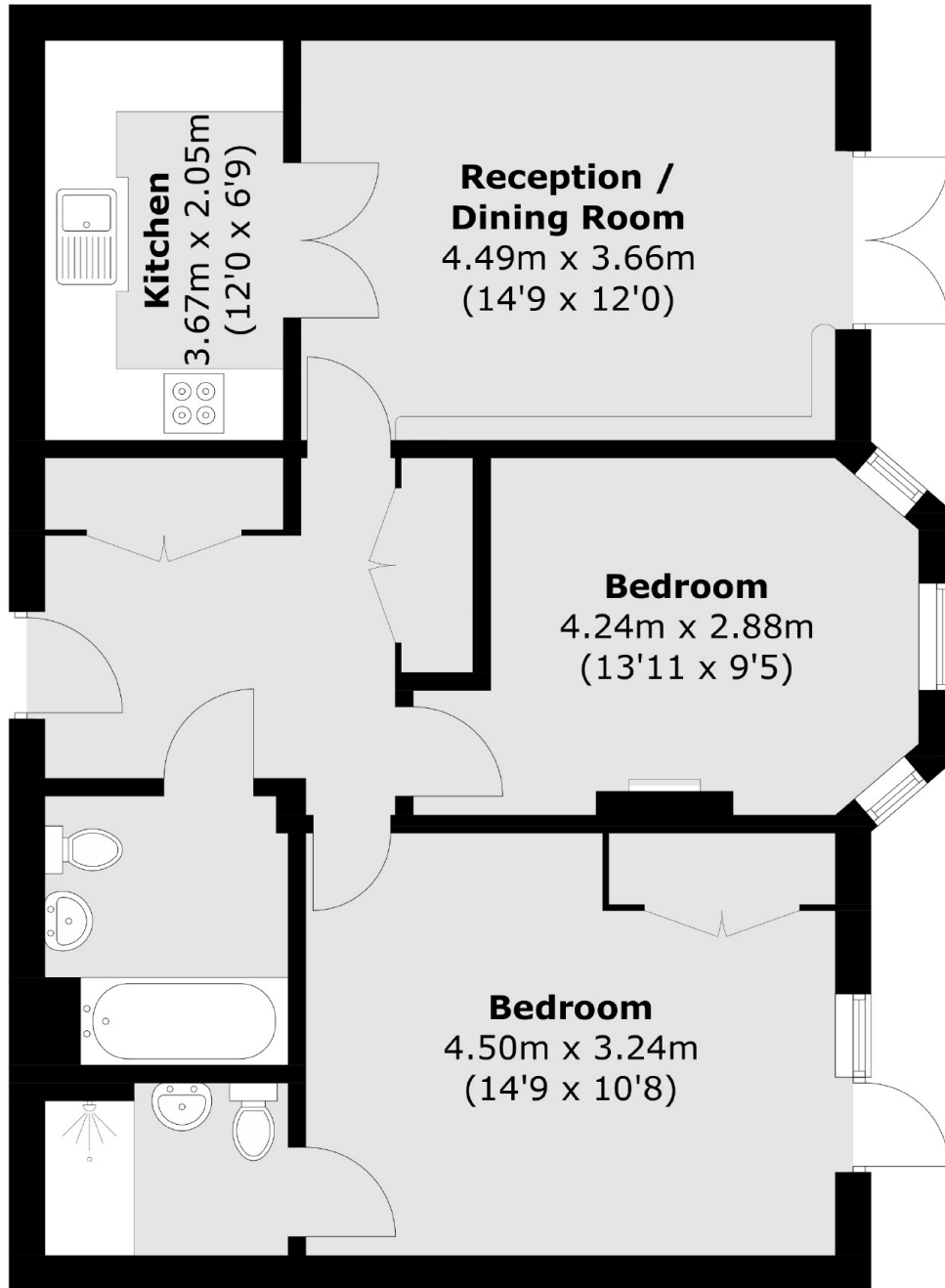
This charming retirement apartment, exclusively for over 65s, offers two spacious bedrooms and two bathrooms. Enjoy the convenience of a private patio, concierge services and gated parking. The property also includes access to a beautifully maintained communal garden, a drawing room for socialising and an on-site laundry room for added convenience. Ideal for independent living in a serene and secure environment.

Situated adjacent to Acton Park and just over five minutes walk from Acton Central station (Overground). Local bus routes include the 207, 218 with direct access to Hammersmith, Ealing and Shepherd's Bush.

### Features

- Retirement Home
- Two Bedrooms
- Two Bathrooms
- Guest Suite Available
- Communal Garden
- Private Patio

The Vale,  
London, W3



Total area (approx.): 69.8 sq. m (751.3 sq. ft)