



Alwyn Gardens, W3

£925,000

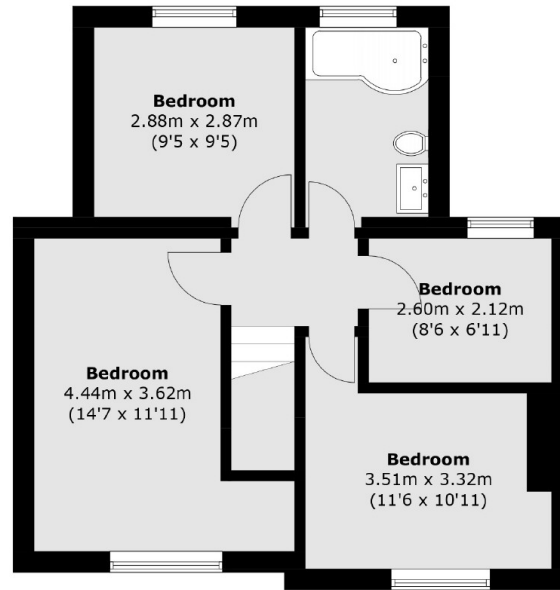
AVAILABLE AGAIN A four bedroom semi-detached family home arranged over two floors with circa 1,100 sq.ft of internal living space. The house has a wrap-around landscaped rear garden with a built in barbeque and makes full use of its westerly and easterly orientation.

Located in a cul-de-sac and within 500 metres from West Acton station (Central line) and just over a half mile from Acton Main Line station (Elizabeth line).

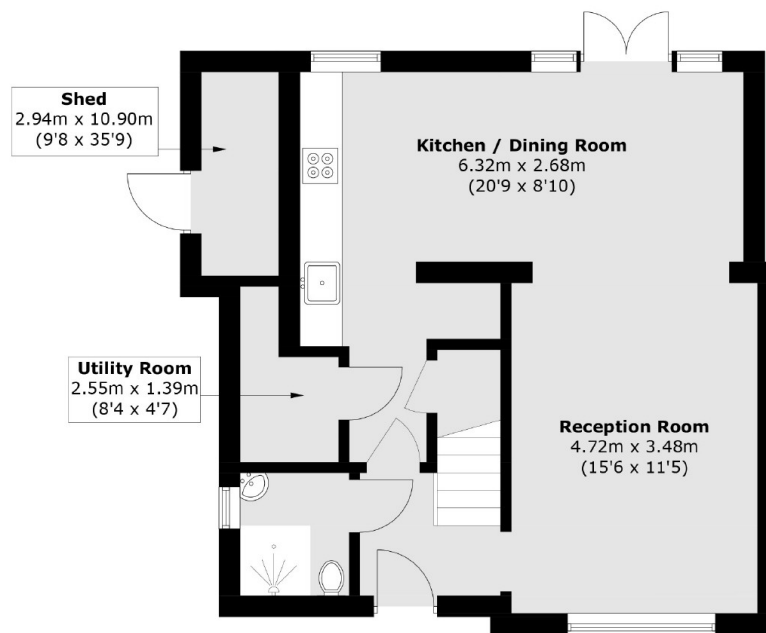
Features

- Four Bedrooms
- Semi-detached
- Driveway Parking
- Two Bathrooms
- No Onward Chain
- Potential to extend (STPP)

Alwyn Gardens, London, W3



First Floor



Ground Floor

Total area (approx.): 100.6 sq. m (1,082.8 sq. ft)
Shed area : 3.3 sq. m (35.5 sq. ft)