



Court Way, W3

£740,000

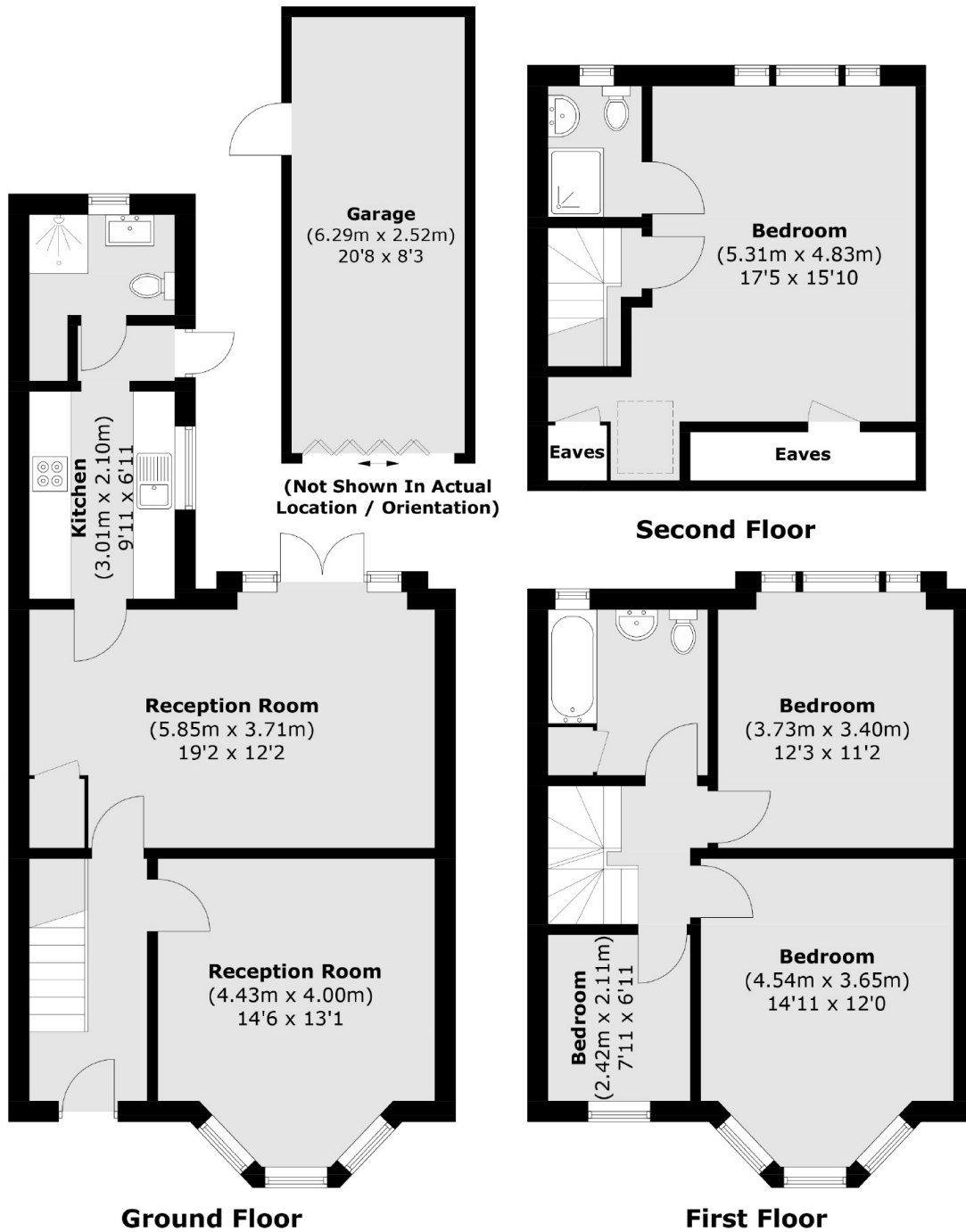
A mid-terraced family home with three bathrooms arranged over three floors with just under 1,400 sq.ft of internal living space. The house has a south-facing garden and a garage with rear access.

Half a mile from Acton Main Line station (Elizabeth line) and North Acton tube station (Central line). North Acton Playing Fields are circa 100 yards away.

Features

- Four Bedrooms
- Three Bathrooms
- No Onward Chain
- South-Facing Garden
- Garage
- Circa 1,400 sq.ft

Court Way, London, W3



Total area (approx.): 126.7 sq. m (1363.7 sq. ft)
Garage (approx.): 15.7 sq. m (169.0 sq. ft)
(Excluding Eaves)