



## Hoopers Mews, W3

£425,000

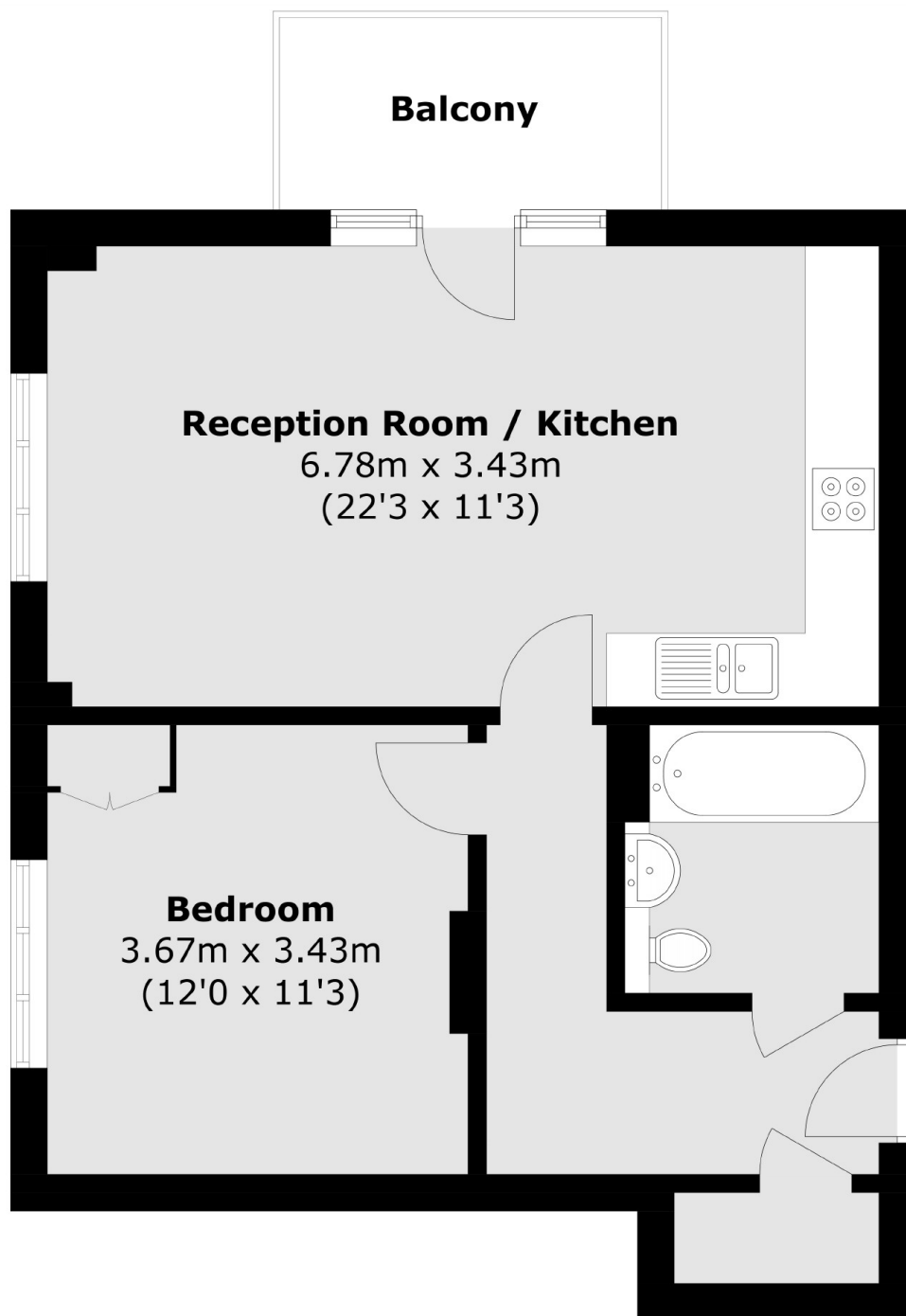
Stunning one bedroom apartment featuring a modern design, a west-facing balcony, and sweeping south-facing city views. Enjoy the comfort of underfloor heating throughout. Perfect for those seeking stylish urban living.

Centrally located off Churchfield Road and just over five minutes walk from Acton Central station (Overground) and approximately fifteen minutes walk from Acton Main Line (Elizabeth line).

### Features

- Contemporary Design
- Fifth Floor
- West Facing Balcony
- Dual Aspect
- Underfloor Heating
- Circa 600 sq.ft

# Hoopers Mews, London, W3



Total area (approx.): 53.1 sq. m (571.6 sq. ft)  
Balcony : 4.9 sq. m (52.7 sq. ft)