



Central Parade, W3 £499,950

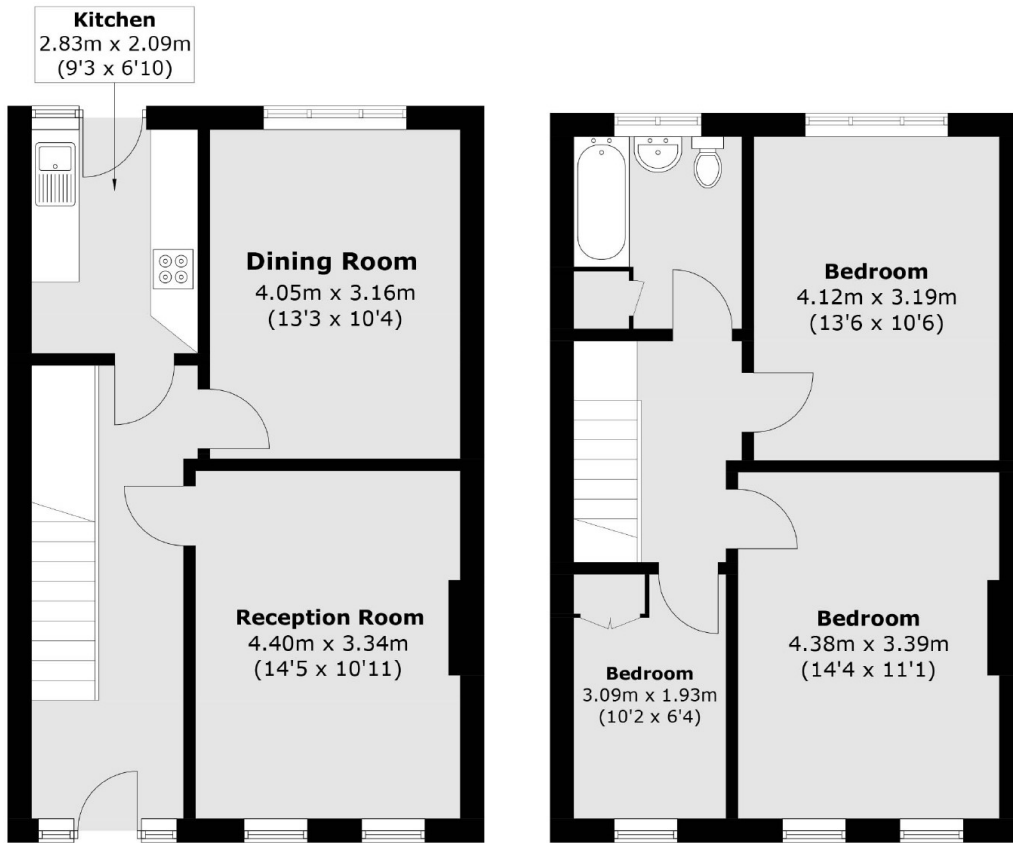
A spacious three bedroom maisonette offering over 1,000 sq.ft of split-level living. Features a separate kitchen and a long lease, providing ample space and comfort. Perfect for families or investors.

Less than one minute's walk from Acton Town tube station (District and Piccadilly lines) and a short walk from the magnificent green open space of Gunnersbury Park.

Features

- Split-Level
- Long Lease
- No Onward Chain
- Separate Kitchen
- Over 1,000 sq.ft
- Close to Station

Central Parade,
London, W3



Ground Floor

First Floor

Total area (approx.): 93.7 sq. m (1008.6 sq. ft)