



Newburgh Road, W3

£525,000

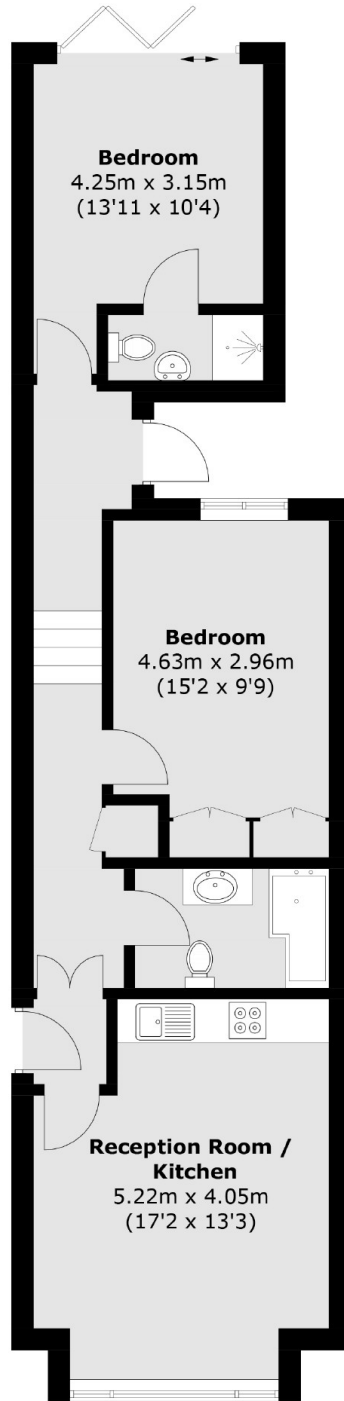
A well presented two bedroom, two bathroom Victorian ground floor period conversion with a private garden. This property has circa 700 sq.ft of internal living space, has been refurbished throughout and will be sold with no onward chain. Perfect for first time buyers and investors.

Adjacent to the sought after Churchfield Road, this property is located within a five minute walk from Acton Central (Overground line) and under a mile from Acton Town station (District and Piccadilly line).

Features

- Victorian Period Conversion
- Two Bedrooms
- Two Bathrooms
- Private Garden
- Circa 700 sq.ft
- No Onward Chain

Newburgh Road, London, W3



Total area (approx.): 63.8 sq. m (686.7 sq. ft)