



## Julian Avenue, W3

£517,500

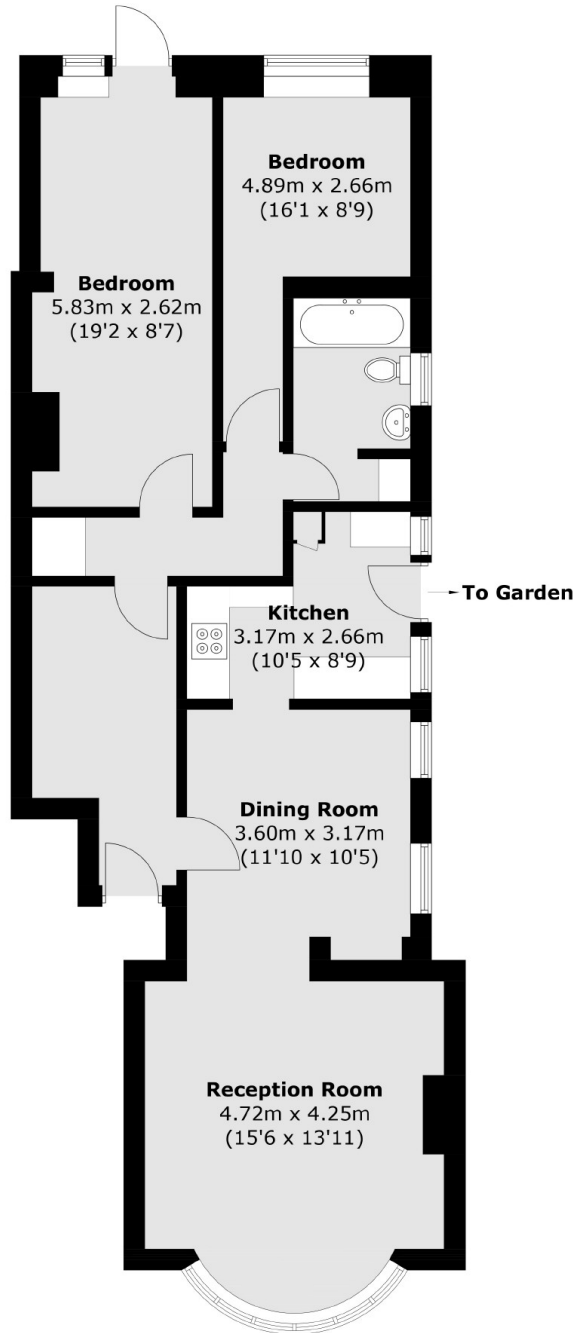
Charming two bedroom conversion flat, approximately 900 sq.ft, featuring a separate kitchen and a delightful south facing garden. Offered with no onward chain, this property will be sold with a share of the freehold.

Under half a mile from Acton Main Line station (Elizabeth line) and under three quarters of a mile from Acton Central station (Overground).

### Features

- Two Bedrooms
- Ground Floor
- South Facing Garden
- No Onward Chain
- Share of Freehold
- Separate Kitchen

Julian Avenue,  
London, W3



**Ground Floor**

Total area (approx.): 81.7 sq. m ( 879.4 sq. ft)