



King Edwards Gardens, W3

£390,000

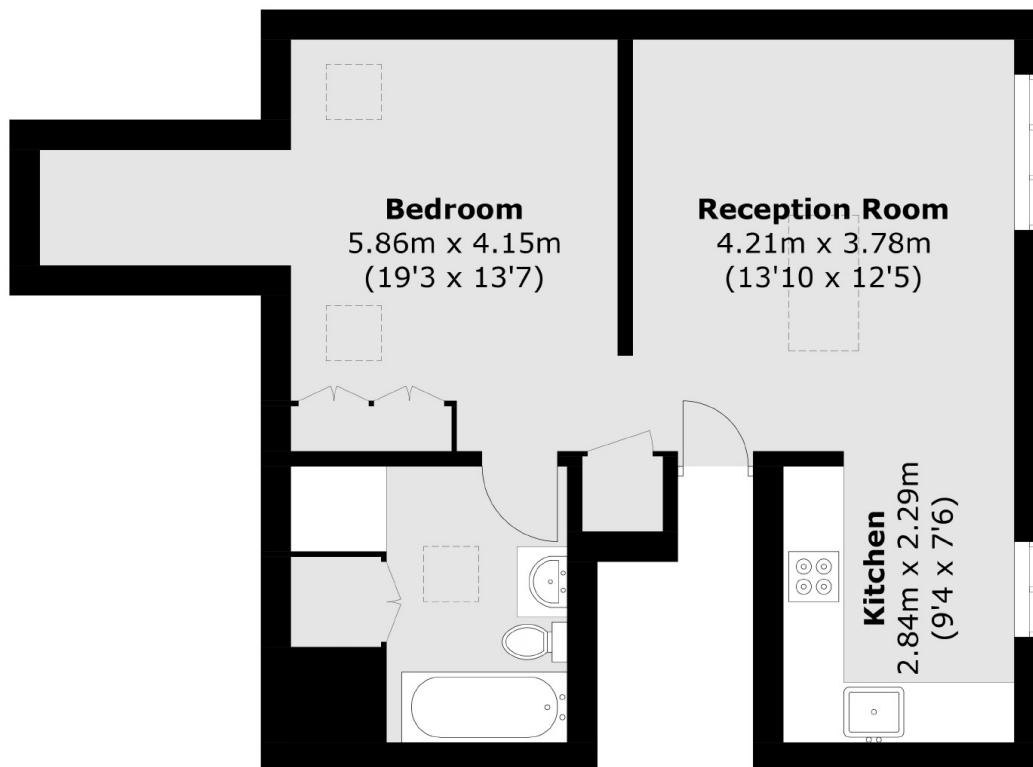
Elegant one bedroom top floor apartment, meticulously designed with high specifications. Enjoy over 500 sq.ft of thoughtfully converted space, offering a blend of modern comfort and style.

Situated in the sought-after Acton Hill area with no through traffic and just over five minutes walk from Ealing Common tube station (District and Piccadilly lines).

Features

Newly Converted
Top Floor
Circa 520 sq.ft
High Specification
CPZ Parking Available
Share of Freehold

King Edwards Gardens, London, W3



Total area (approx.): 47.9 sq. m (515.6 sq. ft)