



## Mill Hill Road, W3

£625,000

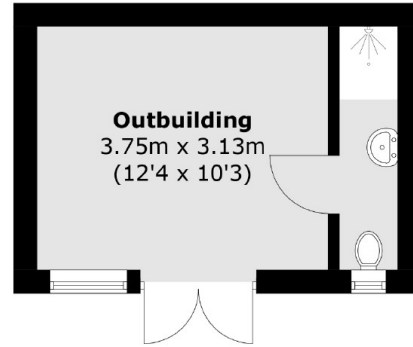
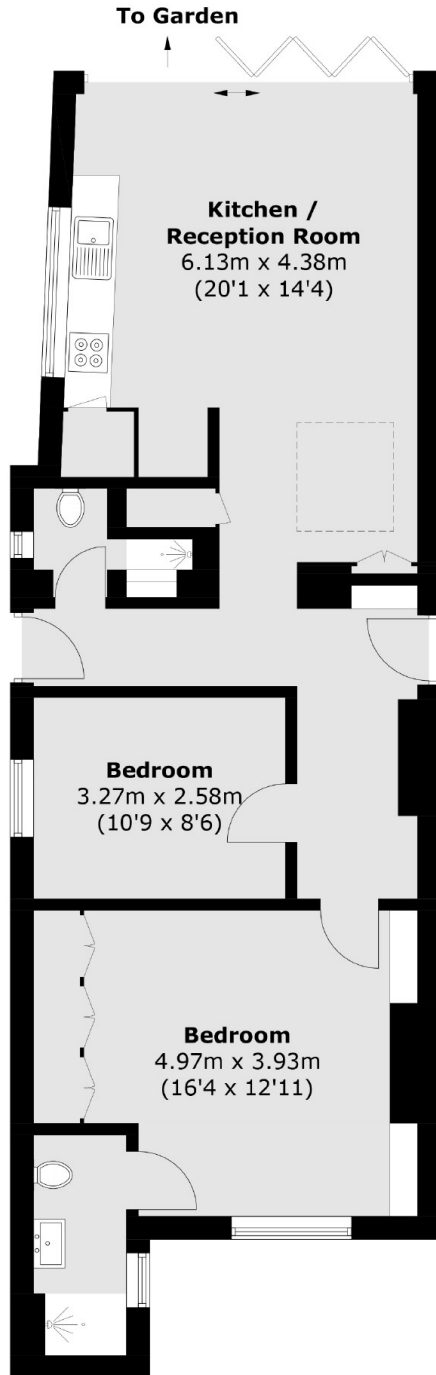
This lower ground floor period conversion apartment has two bedrooms, two bathrooms and a delightful south-facing garden. Enjoy well appointed bedrooms, stylish bathrooms and a private outdoor oasis with the convenience of an outbuilding for work or storage.

Situated within the sought-after Mill Hill Park conservation area and less than five minutes walk from Acton Town tube station (District and Piccadilly lines).

### Features

- Private Entrance
- Two Bedrooms
- Two Bathrooms
- South Facing Garden
- Circa 800 sq.ft
- Garden Studio

# Mill Hill Road, London, W3



(Not Shown In Actual  
Location / Orientation)

Total area (approx.): 72.6 sq. m (781.5 sq. ft)  
Outbuilding area (approx.): 14.9 sq. m (160.4 sq. ft)