



Birkbeck Avenue, W3

£649,000

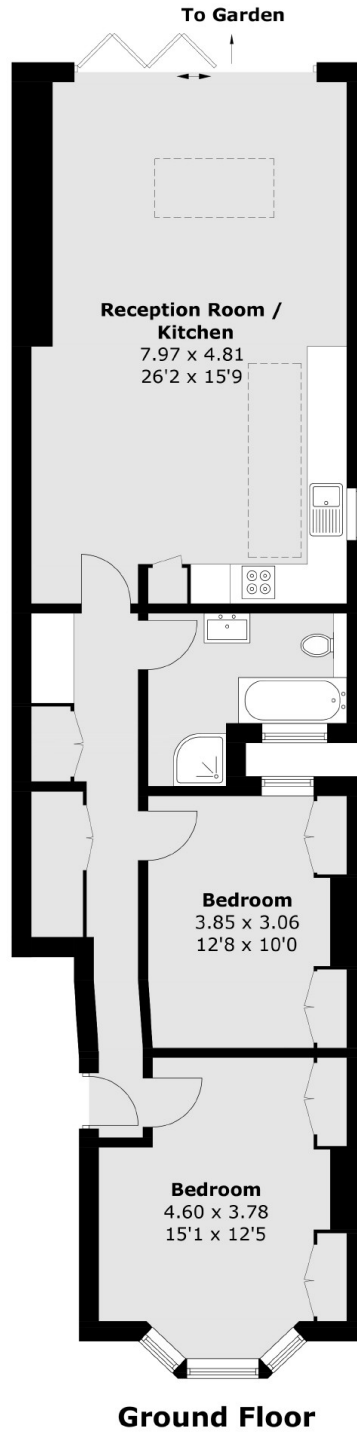
A stunning two bedroom period conversion featuring a beautifully landscaped garden. Recently refurbished, this home seamlessly blends classic character with modern comforts, offering spacious living areas and elegant finishes throughout. Ideal for those seeking a perfect blend of historical charm and contemporary convenience.

Situated on a no through road and approximately five minutes walk from Acton Main Line station (Elizabeth line) and fifteen minutes walk from Acton Central station (Overground).

Features

- Ground Floor Apartment
- Period Conversion
- Circa 900 sq.ft
- Landscaped Garden
- Side Access
- Excellent Condition

Birkbeck Avenue,
London, W3



Total area (approx.): 83.5 sq. m (898.8 sq. ft)

Dexters

Acton
171 High Street
London
W3 6LP
Sales
020 8896 2112

Energy Rating: . We aim to make our particulars both accurate and reliable. However they are not guaranteed; nor do they form part of an offer or contract. If you require clarification on any points then please contact us, especially if you're traveling some distance to view. Please note that appliances and heating systems have not been tested and therefore no warranties can be given as to their good working order.

 **RICS** | Regulated
Estate Agent
and Letting Agent

dexters.co.uk