



## Eastfields Road, W3

£1,050,000

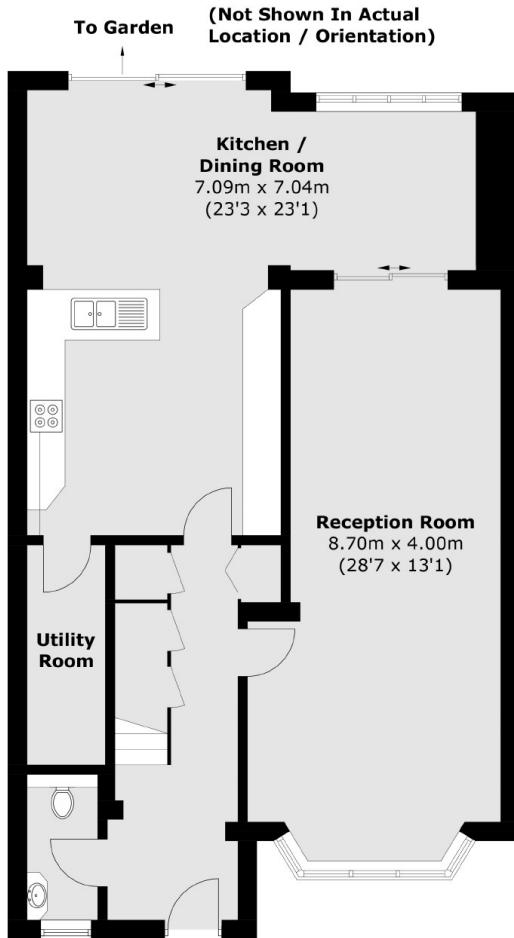
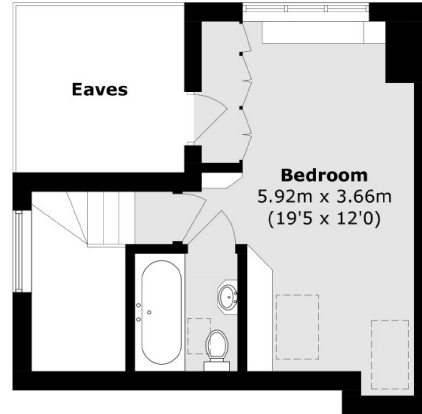
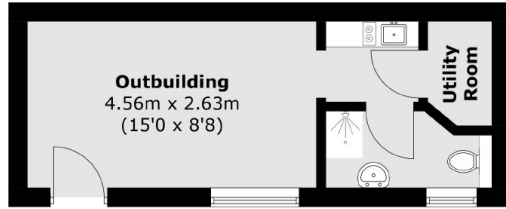
An end-of-terrace house boasting over 1,800 sq.ft, featuring four bedrooms, a double reception area, and an open-plan kitchen and dining room. The property includes a convenient downstairs WC, a utility room, and an outbuilding for additional storage or workspace. Perfect for families, this home offers ample living space and modern amenities.

Situated directly opposite the wonderful green space of North Acton Playing Fields and just over 10 minutes walk from Acton Main Line station (Elizabeth line) and West Acton tube station (Central line).

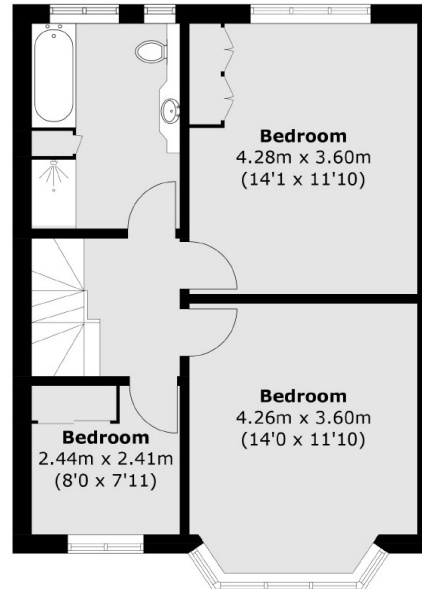
### Features

- Four Bedrooms
- Double Reception
- Three Bathrooms
- Outbuilding
- Over 1,800 sq.ft
- Driveway Parking

Eastfields Road,  
London, W3



**Second Floor**



**Ground Floor**

**First Floor**

Total area (approx.): 168.8 sq. m (1,816.9 sq. ft)  
Outbuilding : 19.4 sq. m (208.8 sq. ft)  
(Excluding Eaves)