



## Cowper Road, W3

£850,000

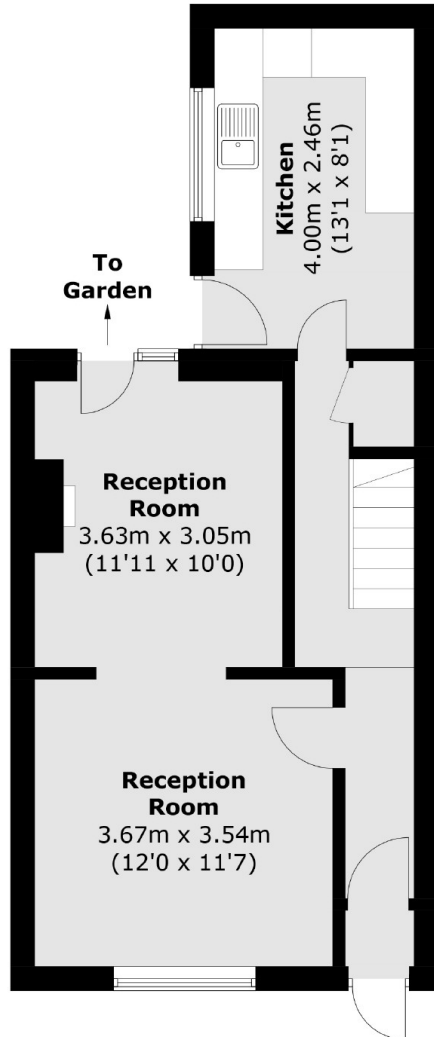
Delightful three bedroom mid-terraced Victorian house featuring a west-facing garden. This property, though in need of modernization, offers significant potential for extension and personalisation. Ideal for those looking to create their dream home.

Situated in the heart of Poets' Corner and a short walk from all the shops and eateries that Churchfield Road has to offer. Acton Central station (Overground) is less than three minutes away.

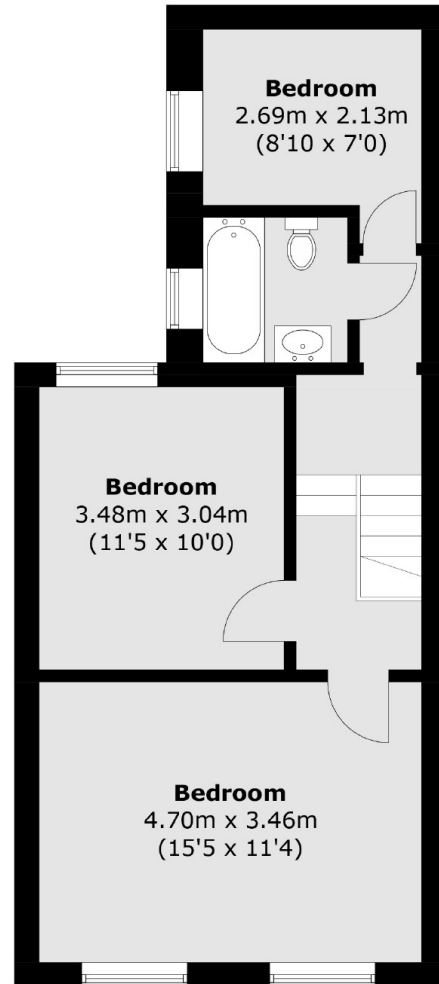
### Features

- Victorian Period House
- Three Bedrooms
- No Onward Chain
- In Need of Modernisation
- West Facing Garden
- Potential to Extend

# Cowper Road, London, W3



**Ground Floor**



**First Floor**

Total area (approx.): 90.3 sq. m (972.0 sq. ft)