



## Manor Gardens, W3

£969 Per week

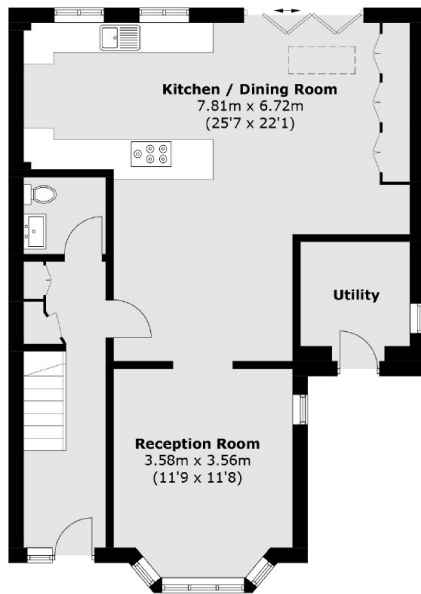
Beautifully presented four bedroom family home set with Gunnersbury Triangle, the property comprises spacious kitchen dining area, separate reception room, two bathrooms, ample storage and allocated parking space.

Manor Gardens is located on the Gunnersbury/Chiswick borders and within 0.6 miles Acton Town underground station (Piccadilly and District Line).

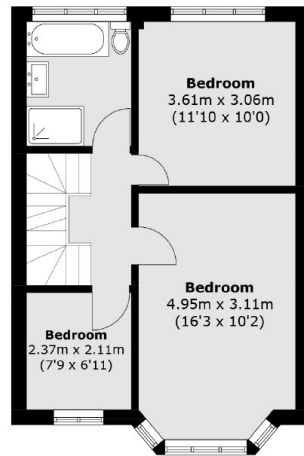
### Features

- Family Home
- Four Bedrooms
- Two Bathrooms
- Kitchen Dining Area
- Allocated Parking
- Ample Storage

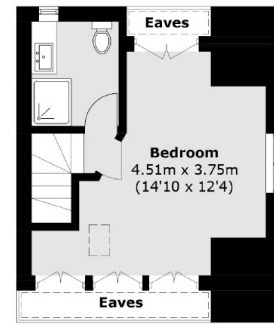
# Manor Gardens, London, W3



**Ground Floor**



**First Floor**



**Second Floor**

Total area (approx.): 141.1 sq. m (1,518.7 sq. ft)  
(Excluding Eaves)