



Palmerston Road, W3

£550,000

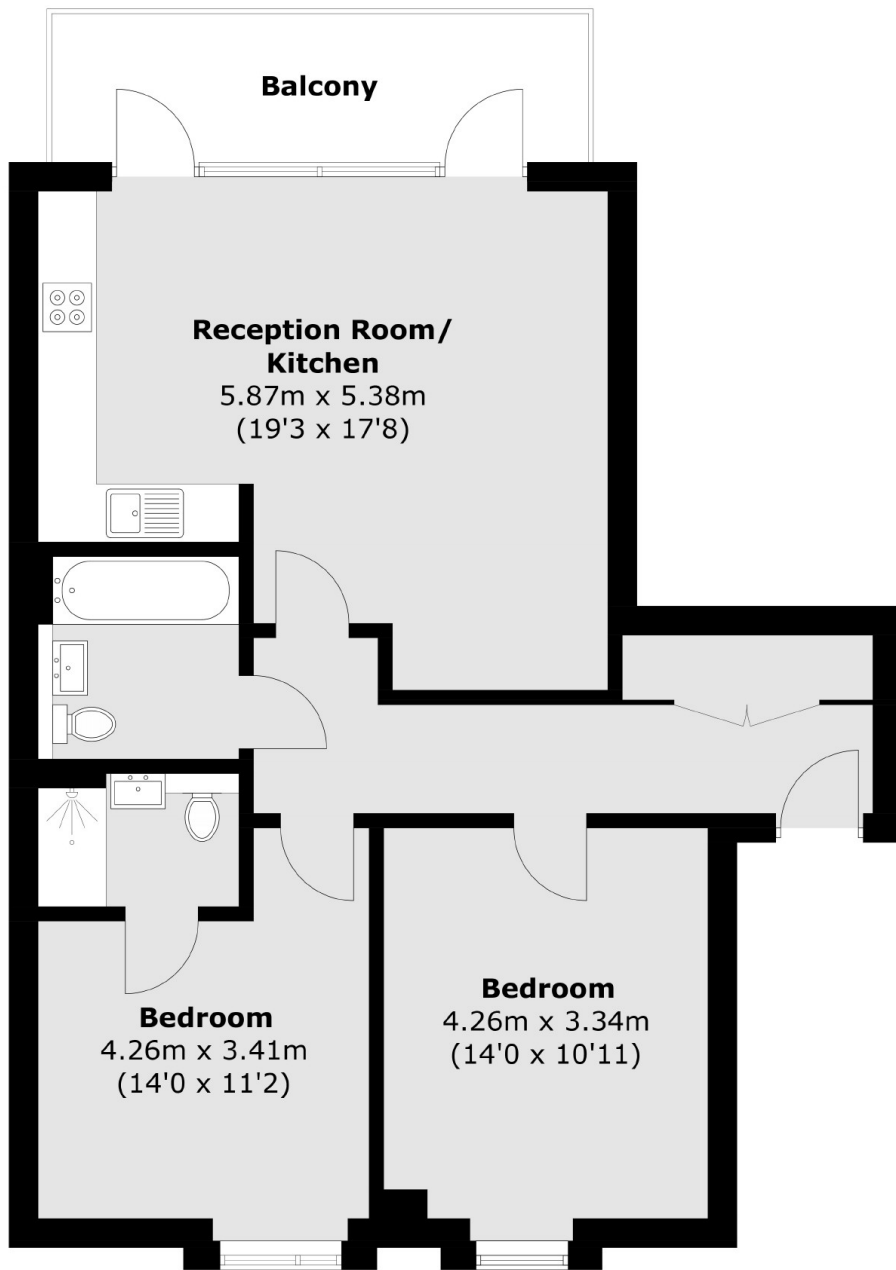
Beautiful dual aspect flat spanning approximately 800 sq.ft. Features include two modern bathrooms and a spacious south-facing balcony with park views. Residents also have access to a well-maintained communal garden. Ideal for comfortable, stylish living.

Less than two minutes walk from South Acton station (Overground) and just over ten minutes walk from Acton Town and Chiswick Park tube stations.

Features

- Fourth Floor Apartment
- Two Double Bedrooms
- Two Bathrooms
- Communal Garden
- South Facing Balcony
- Close to Station

Palmerston Road,
London, W3



Fourth Floor

Total area (approx.): 72.9 sq. m (784.6 sq. ft)
Balcony Area 8.5 sq. m (91.5 sq. ft)