

## Horn Lane, W3

£232,000

Discover this charming fifth floor studio in an Art Deco building, featuring lift access. This property is in excellent condition, combining historical elegance with modern convenience.

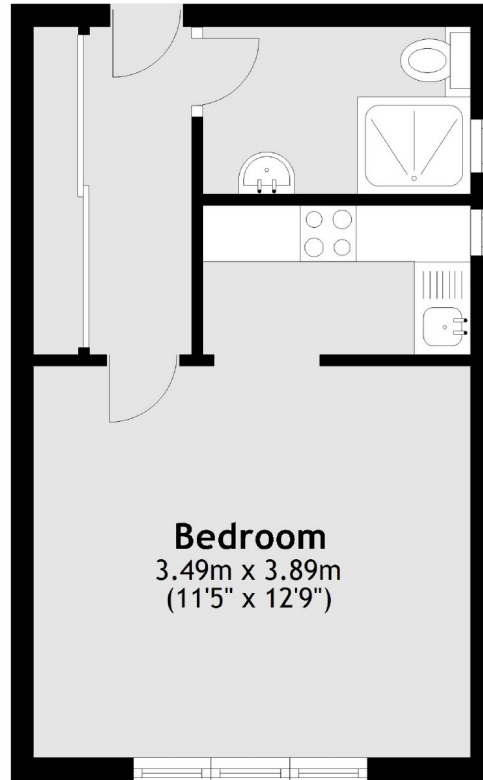
Less than two minutes walk from Acton Main Line station (Elizabeth line) and less than 15 minutes walk from Acton Central (Overground) and North Acton (Central line) stations.

### Features

- Studio Apartment
- Art Deco Building
- Lift Access
- Fifth Floor
- No Onward Chain
- Close to Station

Horn Lane,  
London, W3

## Fifth Floor



Total area: approx. 25.3 sq. metres (272.8 sq. feet)