



Lakeside Drive, NW10

£510,000

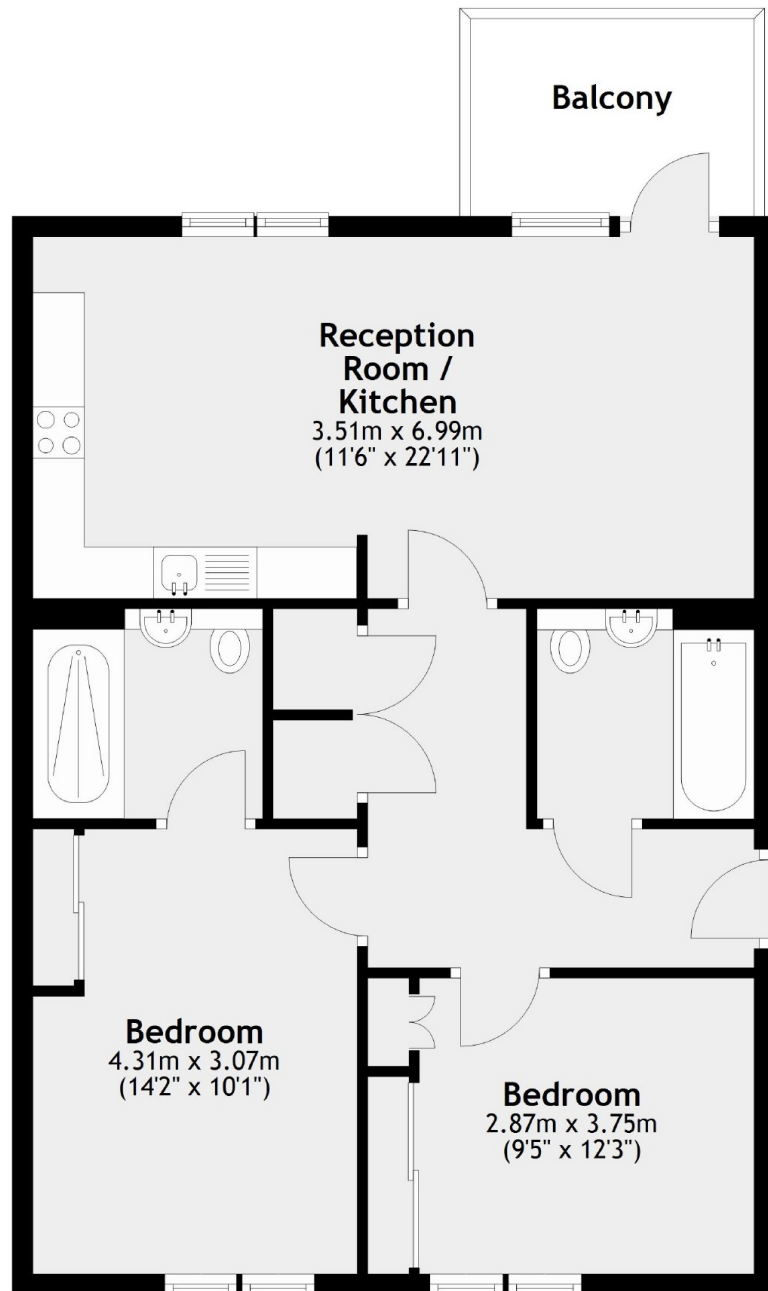
This modern two bedroom flat offers a perfect blend of comfort and convenience. It features two well appointed bathrooms, underfloor heating throughout, and a spacious open-plan living area. Additional amenities include a gated parking space equipped with an EV charger and access to a beautifully maintained gated communal garden. Ideal for contemporary living.

Located less than half a mile from Park Royal (Piccadilly line) and Hanger Lane (Central line) tube stations. Lakeside Drive is served by the 226 bus route with direct access to Ealing Broadway.

Features

- Two Double Bedrooms
- Two Bathrooms
- Allocated Gated Parking
- Covered Balcony
- Communal Garden
- Balcony

Lakeside Drive,
London, NW10



Main area: Approx. 70.3 sq. metres (756.4 sq. feet)
Plus balconies, approx. 5.6 sq. metres (59.8 sq. feet)

Dexters

Acton
171 High Street
London
W3 6LP
Sales
020 8896 2112

Energy Rating: B. We aim to make our particulars both accurate and reliable. However they are not guaranteed; nor do they form part of an offer or contract. If you require clarification on any points then please contact us, especially if you're traveling some distance to view. Please note that appliances and heating systems have not been tested and therefore no warranties can be given as to their good working order.

 **RICS** | Regulated
Estate Agent
and Letting Agent

dexters.co.uk