



## Cowper Road, W3

£1,050,000

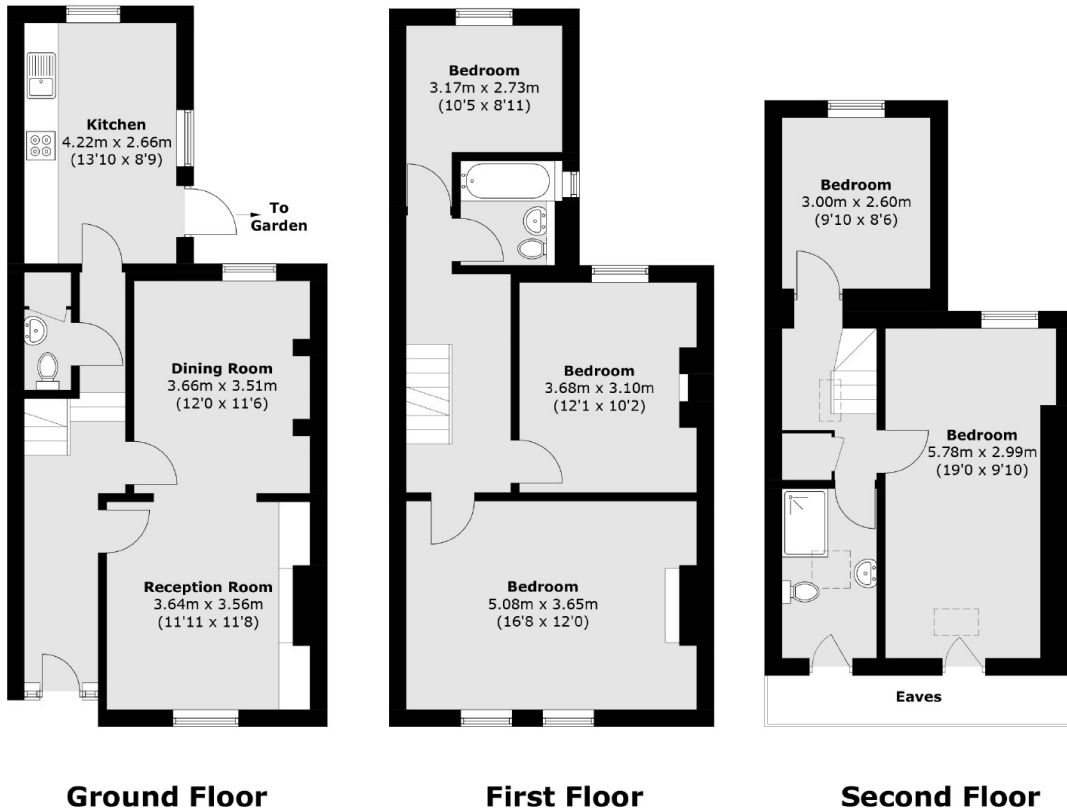
Charming Victorian semi-detached house spanning approximately 1,500 sq.ft across multiple floors. This elegant home features five bedrooms, two bathrooms, a convenient downstairs WC, and a double reception room, perfect for both relaxing and entertaining.

Situated in the heart of Poets' Corner and less than two minutes walk from Acton Central station (Overground) and circa fifteen minutes walk from Acton Main Line station (Elizabeth line).

### Features

- Victorian Period House
- Five Bedrooms
- Two Bathrooms
- Poets' Corner Location
- No Onward Chain
- Downstairs WC

# Cowper Road, London, W3



Total area (approx.): 137.0 sq. m (1474.6 sq. ft)  
(Excluding Eaves)