

Gunnersbury Avenue, W3

£769,950

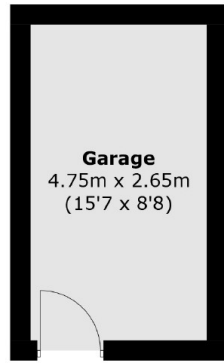
Recently refurbished end-of-terrace house across three floors, boasting two bathrooms, a downstairs WC, and two receptions. Features include a garage, rear access and off-street parking, offering both convenience and modern comfort.

Situated adjacent to Gunnersbury Park and less than half a mile from Acton Town tube station (District and Piccadilly lines). Chiswick High Road is a ten minute walk.

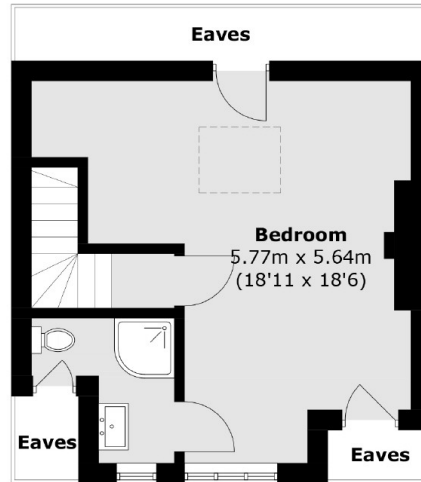
Features

- End of Terrace
- Four Bedrooms
- Two Receptions
- Downstairs WC
- Garage
- No Onward Chain

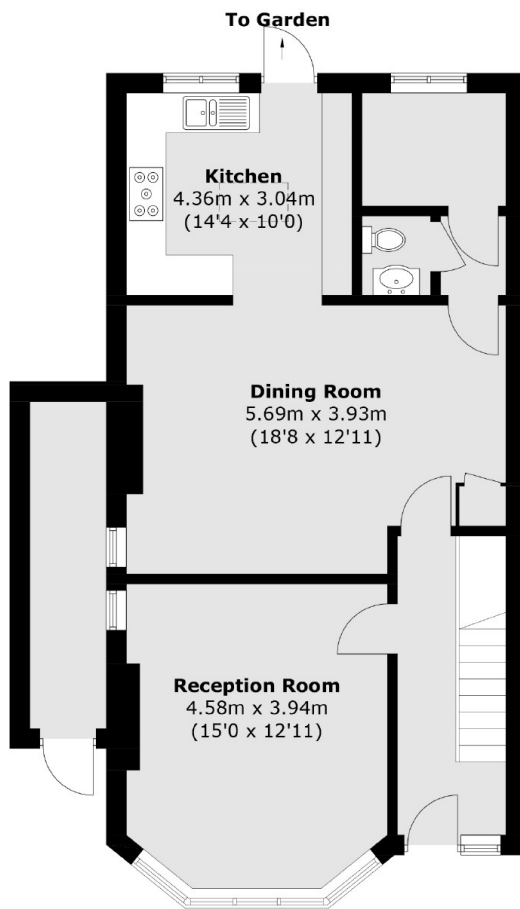
Gunnersbury Avenue, London, W3



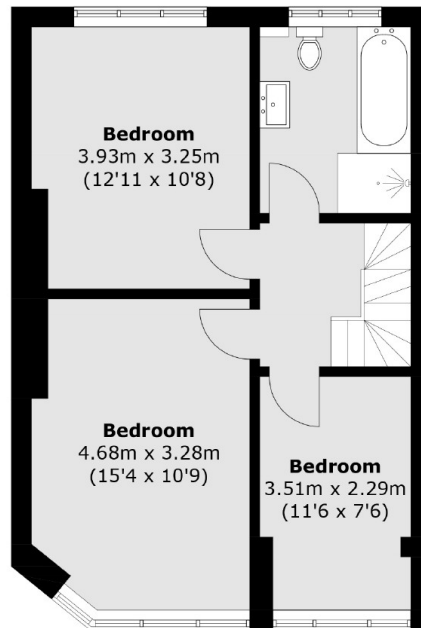
(Not Shown In Actual
Location / Orientation)



Second Floor



Ground Floor



First Floor

Total area (approx.): 146.3 sq. m (1,574.8 sq. ft)
Outbuildings : 18.5 sq. m (199.1 sq. ft)
(Excluding Eaves)