



## King Edwards Gardens, W3

£775,000

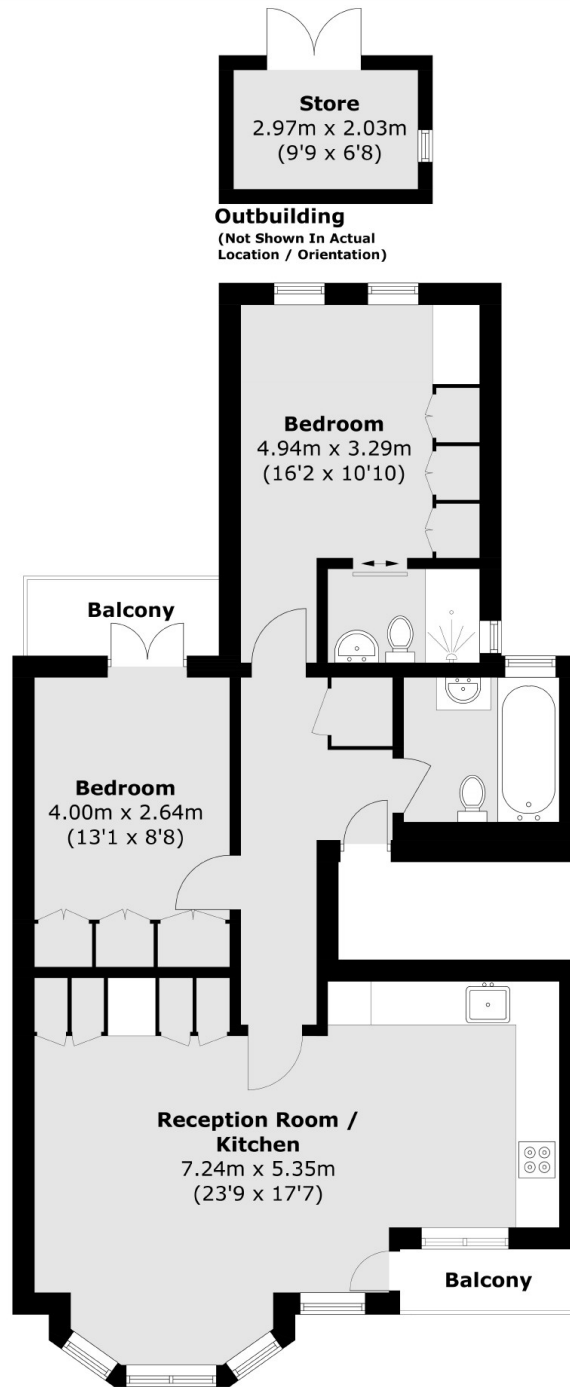
A two bedroom first floor apartment, freshly converted to a high specification, featuring two bathrooms and two balconies for delightful outdoor moments. Enjoy the luxury of a private garden with a charming summerhouse, adding a touch of tranquility to your living space.

Situated in the sought-after Acton Hill area with no through traffic and just over five minutes walk from Ealing Common tube station (District and Piccadilly lines).

### Features

- First Floor Apartment
- Newly Converted
- High Specification
- Private Garden
- Summerhouse
- Two Balconies

# King Edwards Gardens, London, W3



Total area (approx.): 72.6 sq. m (781.5 sq. ft)  
Outbuilding: 4.2 sq. m (45.2 sq. ft)  
Balcony: 4.9 sq. m (52.7 sq. ft)