



King Edwards Gardens, W3 £950,000

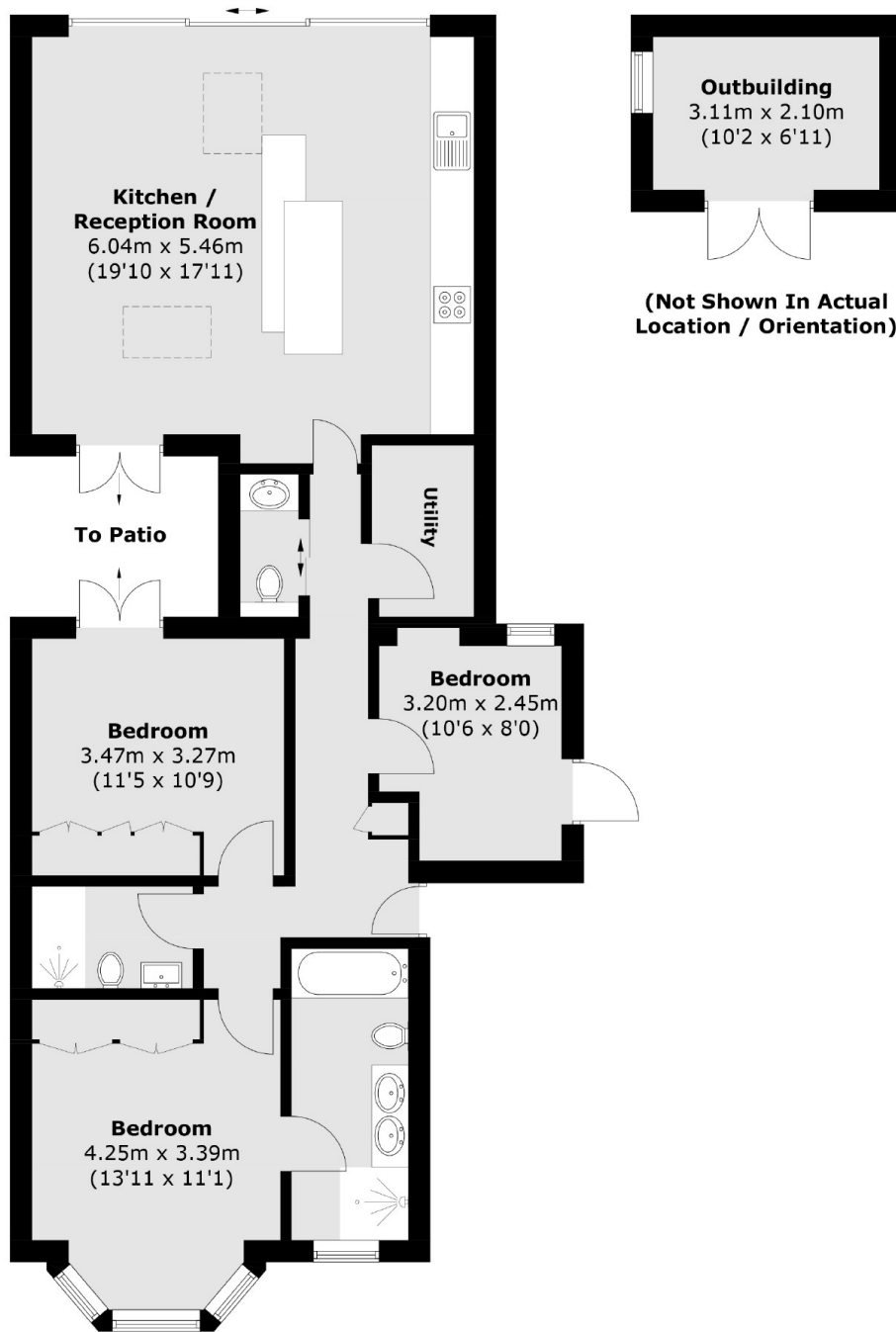
Newly converted ground floor flat boasting three bedrooms, two bathrooms, and a convenient WC. This modern space features a utility room for added functionality and an open-plan reception seamlessly integrated with a contemporary kitchen. Step outside to a charming garden complemented by a versatile summerhouse, perfect for the working from home environment.

Situated in the sought-after Acton Hill area with no through traffic and just over five minutes walk from Ealing Common tube station (District and Piccadilly lines).

Features

Newly Converted
Air Conditioning
Two Bathrooms
Utility Room
Underfloor Heating
High Spec Finish

King Edwards Gardens, London, W3



Total area (approx.): 94.0 sq. m (1,011.8 sq. ft)
Outbuilding: 6.7 sq. m (72.1 sq. ft)