



Highfield Road, W3

£565,000

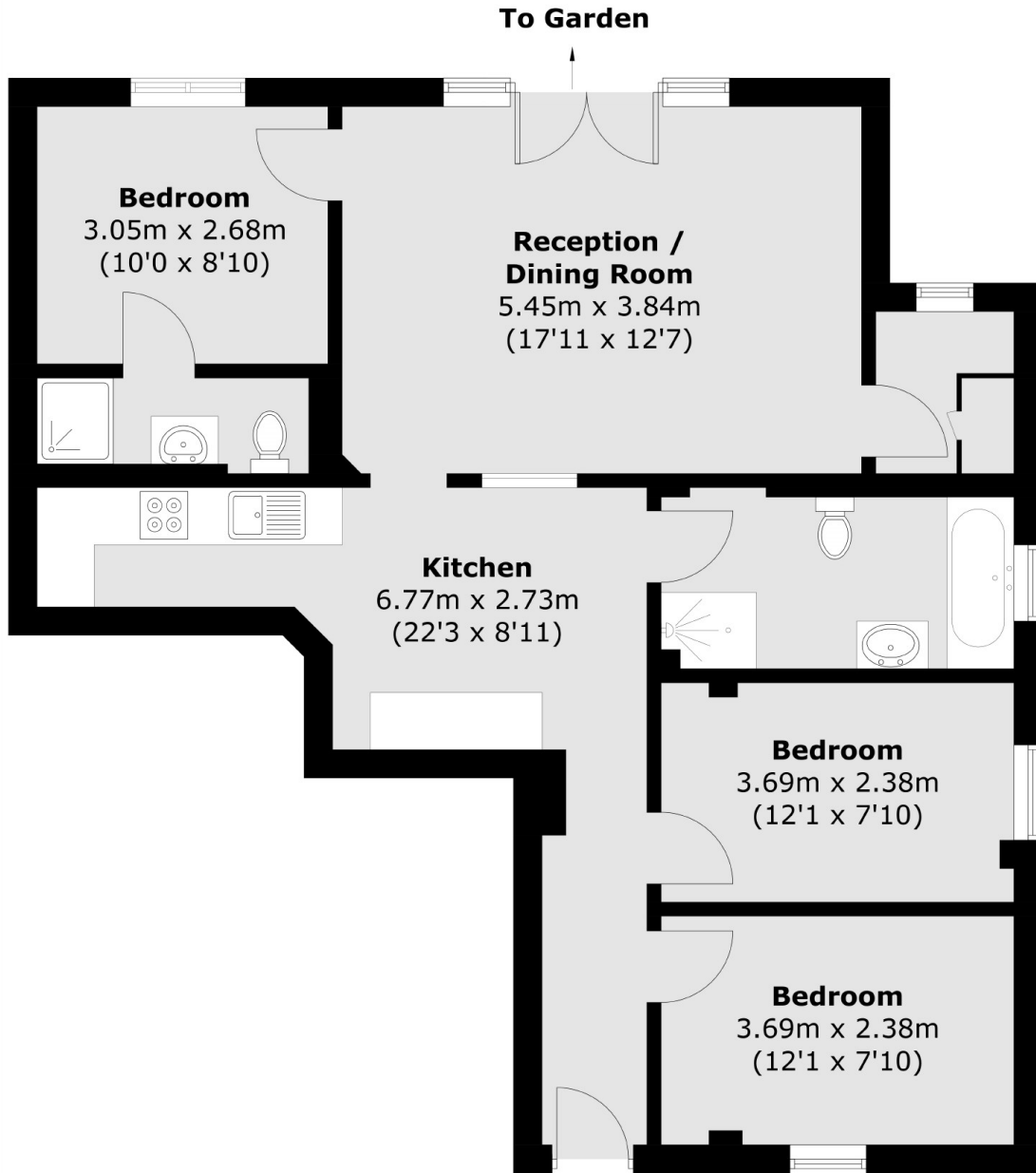
Inviting ground-floor flat featuring three double bedrooms, two bathrooms, and a large private garden. Enjoy the luxury of a private entrance and convenient driveway parking. Sold with no onward chain.

Just over half a mile from West Acton tube station (Central line) and Acton Main Line station (Elizabeth line). The 218 bus route is located close by with direct access into Hammersmith.

Features

Ground Floor Flat
Own Private Entrance
Two Bathrooms
No Onward Chain
Off-Street Parking
Circa 900 sq.ft

Highfield Road,
London, W3



Total area (approx.): 82.1 sq. m (883.7 sq. ft)