



## Horn Lane, W3

£525,000

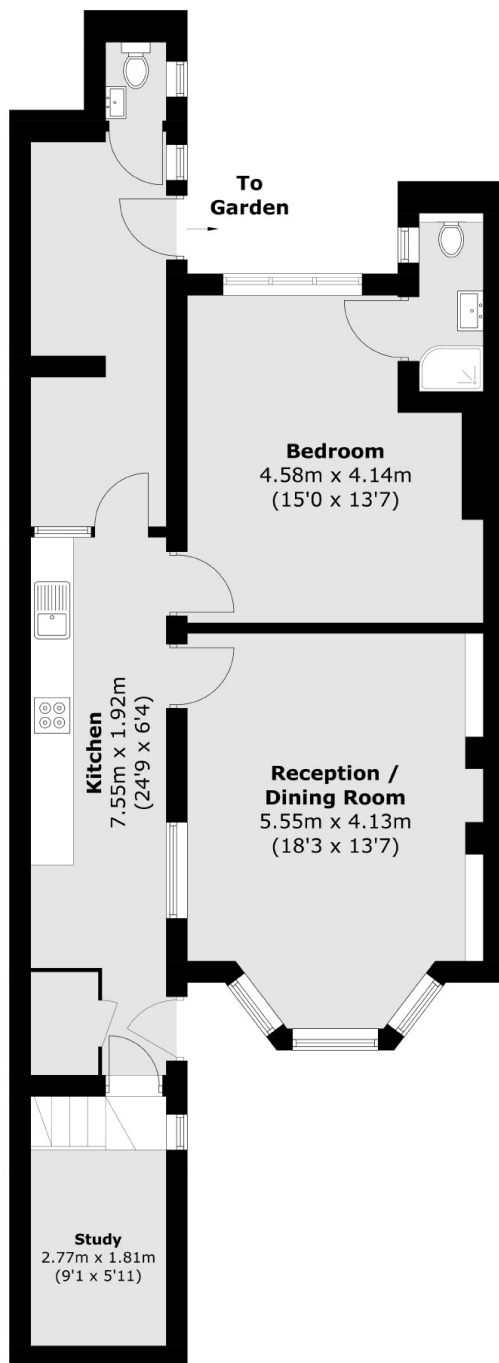
A stunning period conversion flat spanning just under 850 sq.ft with its own entrance and a private rear garden. The flat has been upgraded with a new kitchen and is presented in excellent condition throughout.

Just over five minutes walk from Acton Main Line station (Elizabeth line) and just over half a mile from Acton Central station (Overground).

### Features

- Two Bedrooms
- Private Garden
- Share of Freehold
- No Onward Chain
- Circa 850 sq.ft
- Own Entrance

Horn Lane,  
London, W3



Total area (approx.): 78.3 sq. m (842.8 sq. ft)