



## Petersfield Road, W3

£600,000

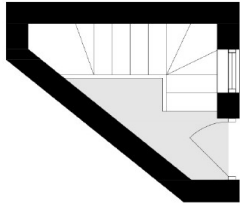
This unique maisonette features a stunning galleried kitchen diner with a glass balustrade and a front south-facing patio. An ideal choice for professional couples seeking a stylish starter home blending modern comfort with urban charm.

Situated within the catchment of the Ofsted rated outstanding Ark Priory Primary Academy. Chiswick Park tube station is just over three quarters of a mile away and South Acton station (Overground) is less than half a mile away.

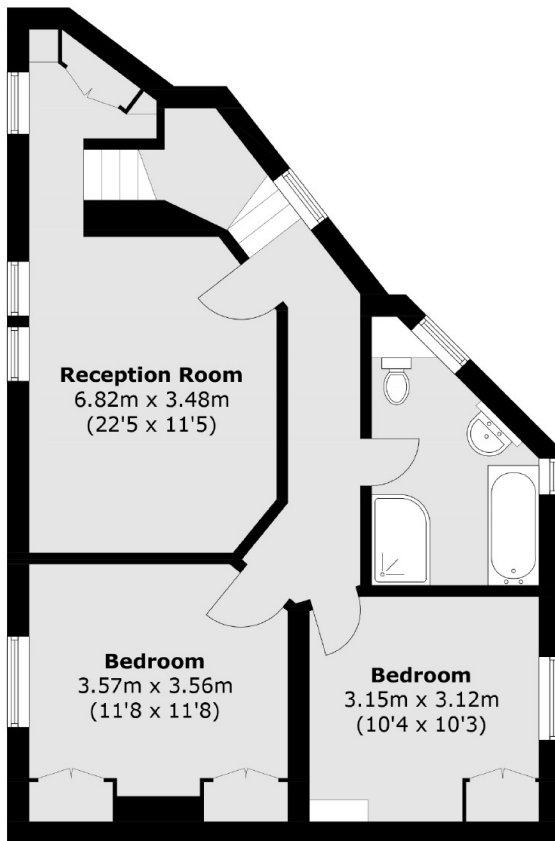
### Features

- Contemporary Flat
- Own Entrance
- Two Double Bedrooms
- South-Facing Patio
- Long Lease
- Split-Level

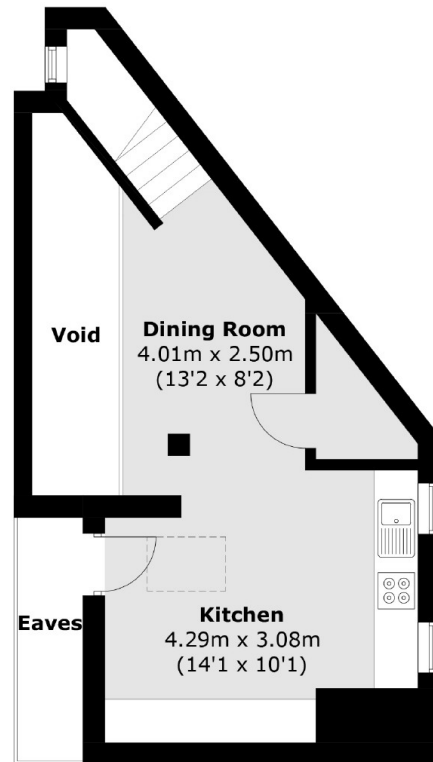
Petersfield Road,  
London, W3



**Ground Floor**



**First Floor**



**Second Floor**

Total area (approx.): 90.1 sq. m (969.8 sq. ft)  
(Excluding Eaves)