



## Petersfield Road, W3

£625,000

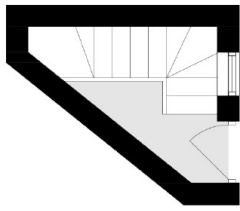
This unique maisonette features a stunning galleried kitchen diner with a glass balustrade and a front south-facing patio. An ideal choice for professional couples seeking a stylish starter home blending modern comfort with urban charm.

Chiswick Park tube station (District line) is just over three quarters of a mile away. South Acton station (Overground) is less than half a mile away.

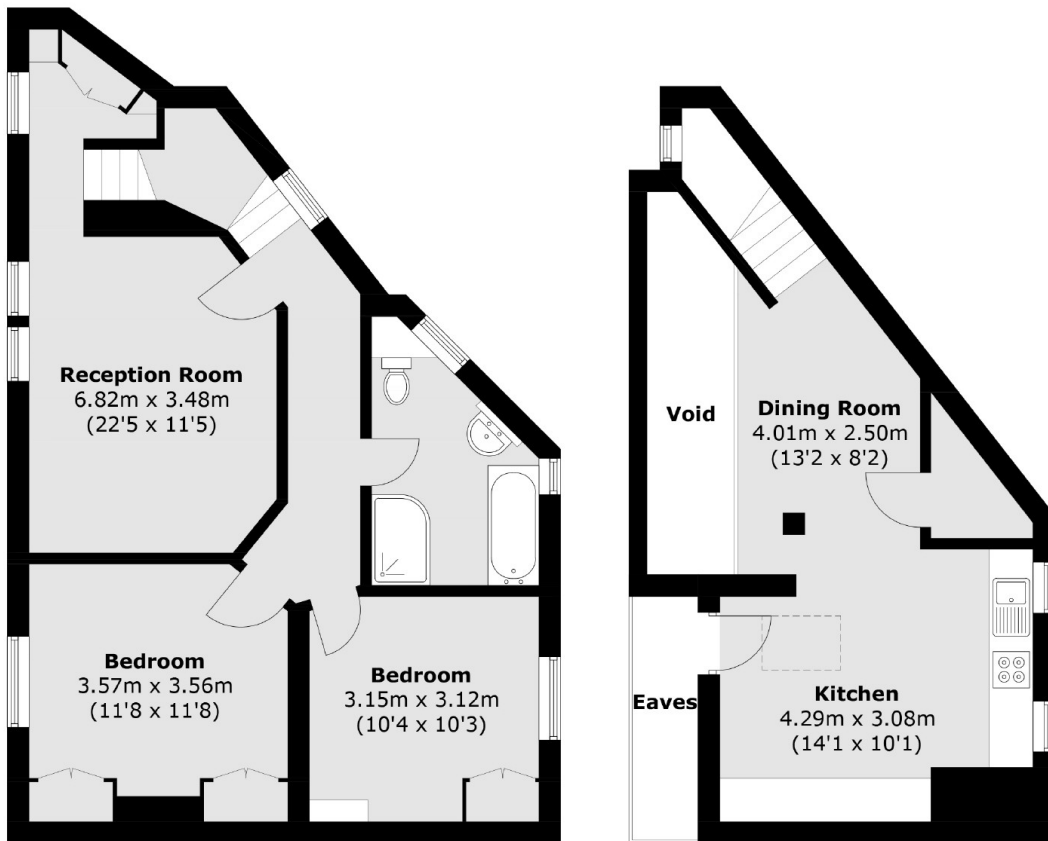
### Features

- Contemporary Flat
- Own Entrance
- Two Double Bedrooms
- South-Facing Patio
- Long Lease
- Split-Level

Petersfield Road,  
London, W3



**Ground Floor**



**First Floor**

**Second Floor**

Total area (approx.): 90.1 sq. m (969.8 sq. ft)  
(Excluding Eaves)