



Newton Avenue, W3

£675,000

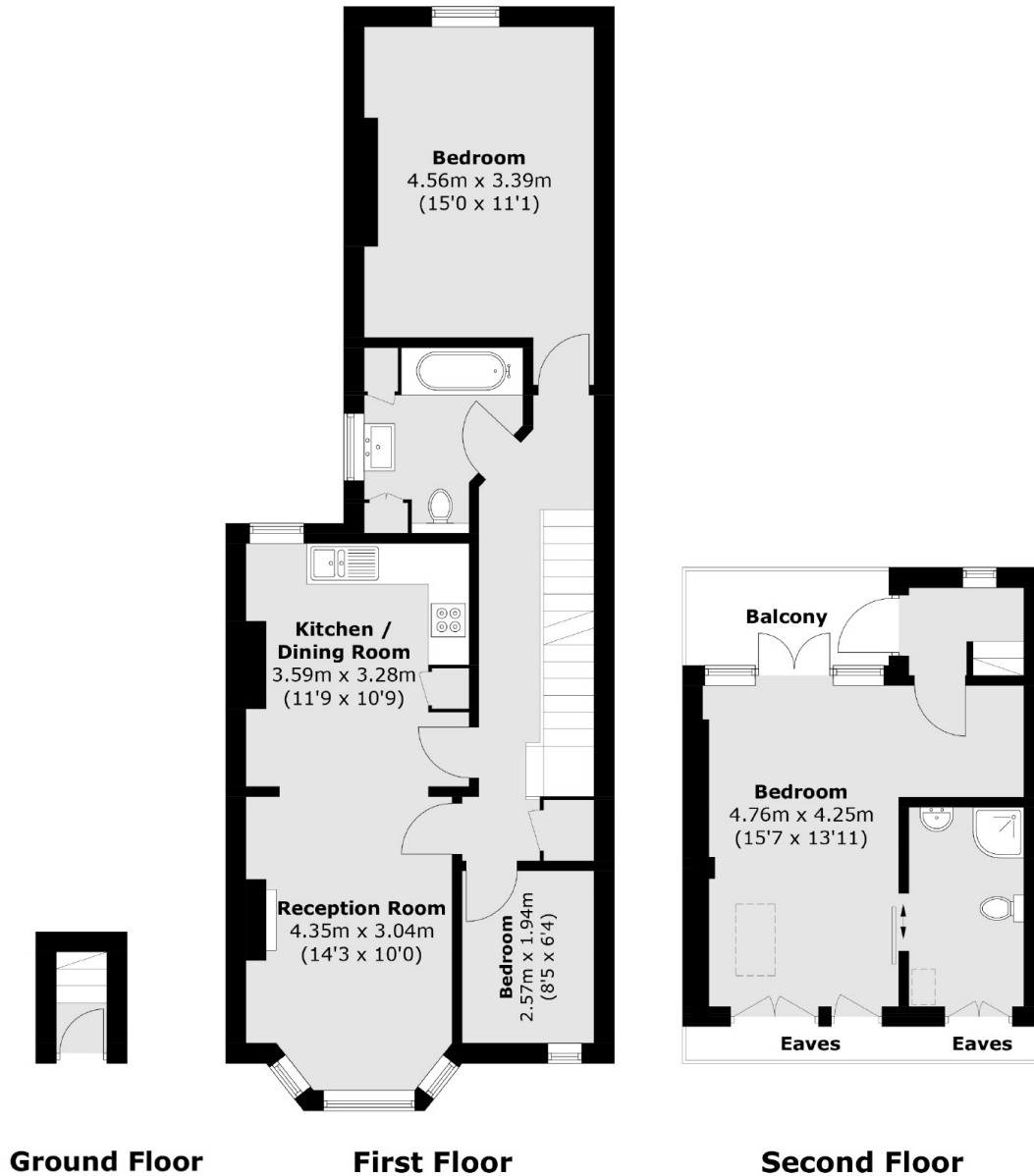
Experience charm in this three bedroom split-level home with two bathrooms and a west facing balcony. With a modern finish and a convenient location, this flat offers seamless living and entertaining space. Sold with the freehold to the building.

Just over a quarter of a mile from South Acton station (Overground) and just under three quarters of a mile from Acton Town and Chiswick Park tube stations.

Features

- Split-Level
- Circa 1,000 sq.ft
- West Facing Balcony
- Two Bathrooms
- Three Bedrooms
- No Onward Chain

Newton Avenue, London, W3



Total area (approx.): 92.4 sq. m (994.5 sq. ft)
(Excluding Eaves)

Balcony area (approx.): 4.2 sq. m (45.2 sq. ft)