



Princes Avenue, W3

£800,000

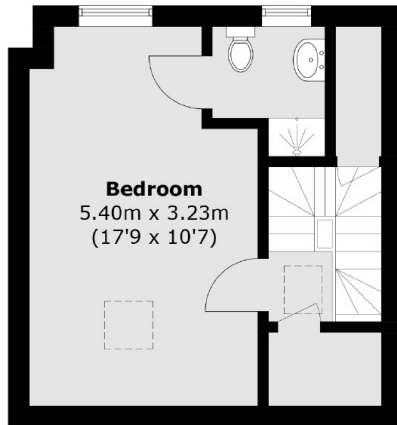
A mid-terrace mock tudor period home, consisting of four bedrooms and arranged over three floors. This home is situated in the sought after Gunnersbury Triangle conservation area and will be sold with no onward chain.

Situated within a six minute walk to the Acton Town station (District and Piccadilly lines), under ten minutes to the Chiswick roundabout and five minutes to the historically popular Gunnersbury Park.

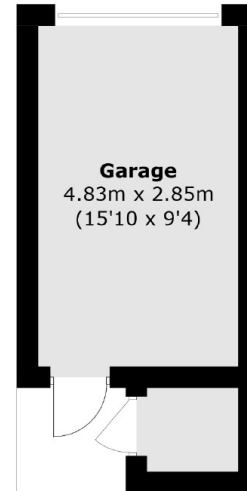
Features

- Four Bedrooms
- No Onward Chain
- West Facing Garden
- Garage
- Rear Access
- Circa 1,300 sq.ft

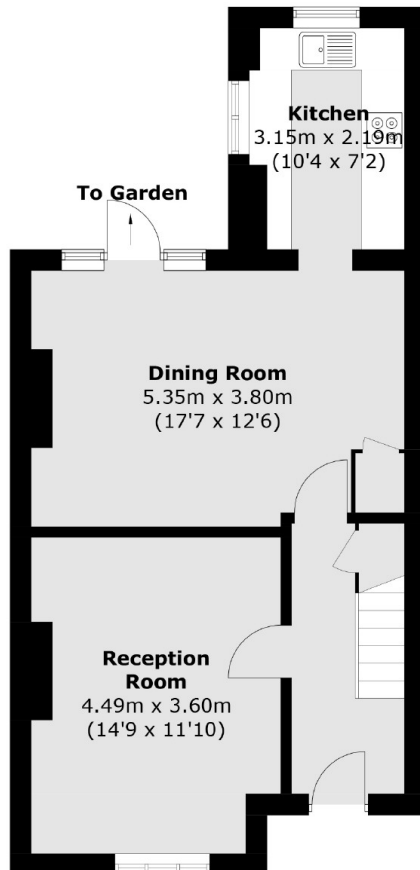
Princes Avenue, London, W3



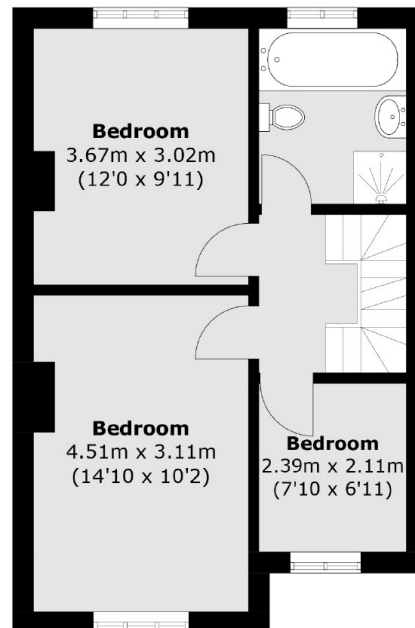
Second Floor



(Not Shown In Actual
Location / Orientation)



Ground Floor



First Floor

Total area (approx.): 118.8 sq. m (1,278.8 sq. ft)
Garage : 16.0 sq. m (172.2 sq. ft)