



Western Avenue, W3

£675,000

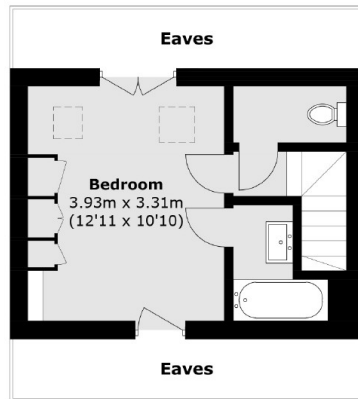
This four bedroom house, featuring two receptions, a modern kitchen, and a garden studio, also includes the convenience of off street parking. Ideal for families, this house offers versatility with its well appointed rooms and outdoor area, including a charming garden.

Just over half a mile from Acton Main Line station (Elizabeth line) and under half a mile from North Acton tube station (Central line).

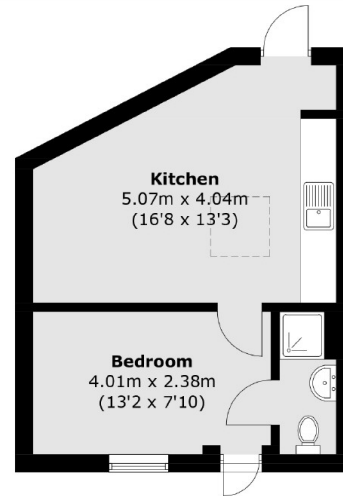
Features

- Four Bedrooms
- Car Port
- Garden Studio
- No Onward Chain
- Three Bathrooms
- Close to Stations

Western Avenue, London, W3

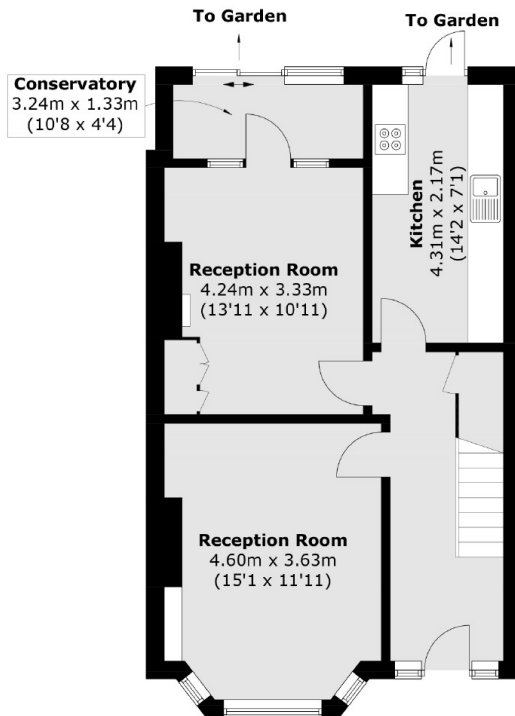


Second Floor

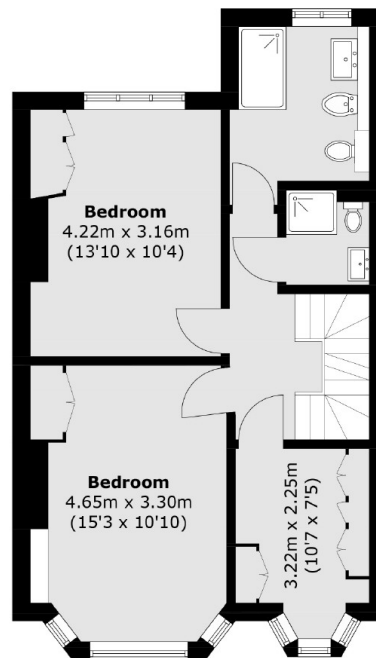


Studio

(Not Shown In Actual Location / Orientation)



Ground Floor



First Floor

Total area (approx.): 131.0 sq. m (1,410 sq. ft)
 Studio: 30.5 sq. m (328.3 sq. ft)
 (Excluding Eaves)